

NIAGARA PENINSULA CONSERVATION AUTHORITY
Board of Directors Meeting
March 21, 2025, 10:00a.m.
Carolinian Hall
3350 Merrittville Hwy., Thorold ON
ADDENDUM

6. PRESENTATIONS

6.1. Conservation Areas Signage Update

Presented by Director, Conservation Areas, Adam Christie, and Manager, Conservation Area Programs & Services, Alicia Powell.

Page 1

6.2. Lake Ontario Coastal Resilience Pilot Project

Presented by Manager, Natural Hazard Management and Resiliency, Brendan Buggeln.

Page 31

9. DISCUSSION ITEMS

9.4. Report No. FA-08-25 RE: Contract Award – Trees for All Potted Stock – Hortico Nurseries Inc.

Page 40

9.5. Report No. FA-12-25 RE: Single Source Procurement for Natural Asset Assessment of Lake Ontario Shoreline – Green Analytics Inc.

Page 43

11. MOTIONS

THAT Report No. FA-07-25 RE: Agreement of Services between the Corporation of the Township of Wainfleet and Niagara Peninsula Conservation Authority **BE POSTPONED**;

AND THAT staff **BE DIRECTED** to bring forward Report No. FA-07-25 RE: Agreement of Services between the Corporation of the Township of Wainfleet and Niagara Peninsula Conservation Authority following the Corporation of the Township of Wainfleet's Council meeting where such matters have been considered.



Niagara Peninsula
CONSERVATION
nature for all

CONSERVATION AREAS SIGNAGE UPDATE

NPCA Board Meeting
March 21, 2025

ADAM CHRISTIE
Director, Conservation Areas



ALICIA POWELL
Manager, Conservation Areas
Programs and Services



AGENDA

- Introduction
- Strategic Goals
- Signage Overview
- Conservation Area Priorities
- Signage Project Overview
- Signage Samples
- Next Steps
- Questions



NPCA'S 2021-2031 STRATEGIC PLAN

Connecting People to Nature

- Improve services and visitor experiences at NPCA properties
 - Facilities, buildings, trail maps, wayfinding and accessibility
- Proactively seek opportunities to enhance trail connections with active transportation routes



CONSERVATION AREA ENHANCEMENT PRIORITIES

Improvement of greenspace infrastructure to increase safe access to NPCA conservation areas (Cave Springs, St. Johns, Rockway).

Results of Project



Enhanced parking and entrance areas



Improved accessibility



Trail improvement with new boardwalks, stairs and wayfinding signage



St. Johns: Enhanced Parking & Entrance Areas



Cave Springs: Enhanced Parking & Entrance Areas



Rockway: Enhanced Parking & Entrance Areas



ROCKWAY CONSERVATION AREA







NPCA WATERSHED



FUNDING PARTNERS

- Canadian Community Revitalization Fund (Federal)
- Niagara Region – Public Realm Improvement Program (Rockway)
- Niagara Peninsula Conservation Foundation (NPCF)
- NPCA Capital Funding



NPCA ENGAGEMENT

Cave Springs

- Town of Lincoln
- Bruce Trail Club
- Geopark
- Friends of Margaret Reed
- PAC

Rockway

- Town of Lincoln
- Bruce Trail Club
- Geopark
- Rockway Community Club
- PAC



ENHANCED SIGNAGE PROJECT THEMES

ENHANCE VISITOR EXPERIENCE

- Importance of an effective, user-friendly wayfinding system is for reducing discomfort, confusion and disorientation
- Strategically placed signage to clarify routes at key decision-making points and guide people to important/interesting focal points along the trails
- Develop an interpretive program that will engage visitors through captivating narratives that deepen their connection to the area

SHARE ENGAGING NARRATIVES

- A thoughtful, professional interpretive program
- Communicate the values of the NPCA and its stakeholders
- Convey the ecological, historical and cultural significance of the Rockway and Cave Springs Conservation Areas and greater Niagara Peninsula watershed through captivating text and graphics

IMPROVE EQUITABLE ACCESS

- Create an environment that is inviting to all people regardless of age, gender identification, cultural background, or physical and cognitive ability
- Outcomes-based approach that considers how interpretive signage and wayfinding can connect visitors to important social, physical, and mental health benefits within the conservation areas

REDUCE ENVIRONMENTAL IMPACT

- Consider environmental factors, sustainability, and longevity → central to design approach and material selection
- Seeking experienced firm in designing sign programs
- Materials that withstand the southern Ontario climate
- Experience with not-for-profits and publicly-funded sites that are accountable to environmentally sustainable practices



PROJECT SCOPE

Planning and design of interpretive and wayfinding signage for Rockway Conservation Area and Cave Springs Conservation Area.

DELIVERABLES

1. Interpretive Program Framework

- Outcome of engagement and community workshops
- → Goals, themes, key messages, audience

2. Thematic Design Package

- Location planning, site audits, language

3. Design Development Package

- Detailed scale, materials, finishes, typography, colour

4. Interpretive and Wayfinding Signage Plan

- Final deliverable
- → Finalized signage design
- Fabrication-ready specs
- Final images and content

15

Cygnus

[Home](#) [Services & Approach](#) [Our Work](#) [News](#) [Contact Us](#)



Hello, we're Cygnus.

We improve how people navigate your environment, access your services, and engage with your brand.

OTHER WAYFINDING CONSULTANTS

SIGN FABRICATORS

ADVERTISING & BRAND AGENCIES

Plan

We find clarity through research and planning.

Initial planning stages ensure an accurate understanding of visitor needs and builds awareness for unique site conditions, project dependencies, and regional codes that will guide the design process to successful outcomes.

Design

We guide and inform visitors through design.

Exceptional design reflects the site architecture, community and cultural context, and vision to dramatically impact a visitor's perception of space, their access to services, and their loyalty to your brand.

Deliver

We remain accountable through delivery.

Our project management expertise award us the means to respond to all aspects of a project, managing activities from construction to installation while supporting the needs of our clients and vendors.

Cygnus



NPCA PROJECT DESIGN & APPROACH



Identity
Guidelines

- **Creative leadership and collaboration**
 - NPCA staff played a key role in laying the groundwork for these signs, establishing strong brand standards, and contributing valuable content
 - Creative collaboration between internal teams and external experts
 - Across the NPCA – Communications. Conservation Areas, GIS
- **Fresh design approach**
 - In-house design and development of NPCA Brand Identity and logo by Rob Petrullo
 - The use of NPCA's secondary colour palette brought added vibrancy and a fresh look to the interpretive signage



NPCA PROJECT DESIGN & APPROACH

• Signage expertise

- NPCA staff laid the foundation for this project in previous designs (Binbrook)
- Cygnus, a trusted consultant with extensive experience with conservation authorities, ensured high-quality design and durability
- Dedication to visitor engagement in design and content development

• Collaborative effort

- Teams across NPCA, including GIS, conservation areas, and communications, worked together to create visually captivating and informative signs

• Future impact

- This project sets the standard for interpretive signage across NPCA conservation areas to continue enhancing visitor experiences



NPCA INTERPRETIVE SIGNAGE BRAND

GRAPHIC ASSETS
Colours & Finishes



Pantone 2613C



Pantone 188C



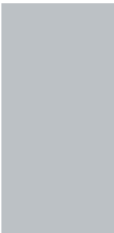
Pantone 1685C



Pantone 2955C



Pantone 3302C



Light Gray
MP07024 Timber Wolf

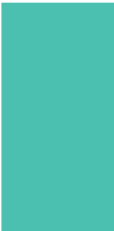
NPCA Identity Colors



Earth Blue
Pantone 7700C
CMYK 93 - 23 - 0 - 62



Winter Pine
Pantone 3282C
CMYK 85 - 33 - 62 - 15

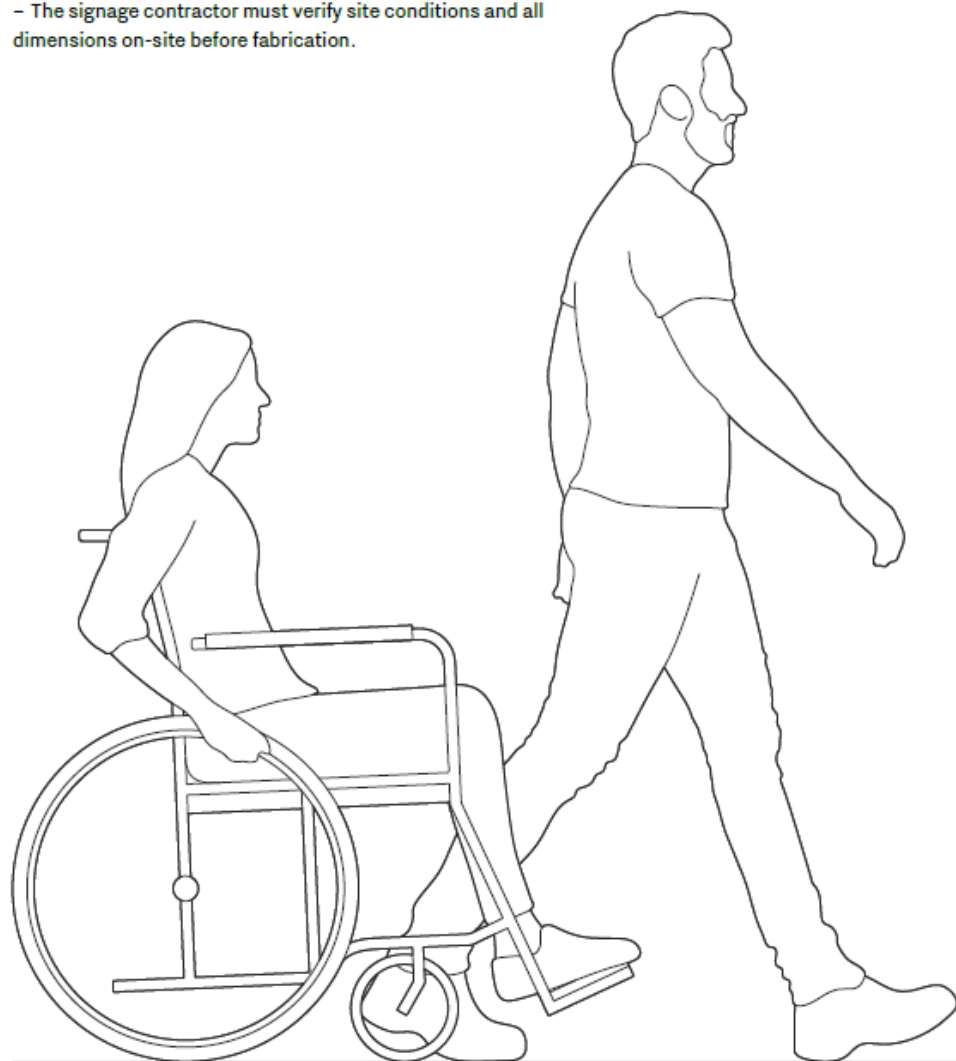


Sea Foam
Pantone 3258C
CMYK 76 - 4 - 35 - 0



Signage Details

- The signage contractor must provide colour and print samples for review and approval by NPCA prior to fabrication.
- The signage contractor must verify site conditions and all dimensions on-site before fabrication.



Top View

127 mm
5"

76 mm
3"

25 mm
1"

450 mm
1'-5 1/8"

Slant the surface and Seal the top.
Aluminum top plate (1/8" thick), grind smooth and painted light gray

Front View

1,471 mm
4'-9 7/8"

1,392 mm
4'-6 13/16"

450 mm
1'-5 1/8"

Section

25 mm
1"

76 mm
3"

10"

OPTION 1:
6 mm (1/4" THICK) aluminum panel, graphic print sublimated in powder coat

OPTION 2:
10 mm (3/8" THICK) aluminum panel, graphic print sublimated in powder coat

1" x 1-1/2" (1/8" thick) aluminum rectangular tubes welded to the back of the aluminum graphic panel. No dimpling on the face of the aluminum graphic panel due to the welding process is acceptable. Paint all tubes and fasteners light gray

Standard aluminum tube 3"x5" (1/8" thick) to be painted light gray

Working With Nature

USING GREEN INFRASTRUCTURE

Cave Springs lies in the UNESCO Nagara Ecopark and Kappahen Reserve, a place inspiring for humans and nature to thrive together. An innovative stormwater system breathes your feet is just one way NPCA supports this important goal.



It is a natural beauty landscape. It is important to utilizing living nature with the environment. It is a healthy environment with the natural beauty landscape. It is a healthy environment with the natural beauty landscape. It is a healthy environment with the natural beauty landscape.

The landscape is a natural beauty landscape. It is important to utilizing living nature with the environment. It is a healthy environment with the natural beauty landscape. It is a healthy environment with the natural beauty landscape. It is a healthy environment with the natural beauty landscape.



It is a natural beauty landscape. It is important to utilizing living nature with the environment. It is a healthy environment with the natural beauty landscape. It is a healthy environment with the natural beauty landscape. It is a healthy environment with the natural beauty landscape.

Working With Nature

USING GREEN INFRASTRUCTURE

Cave Springs lies in the UNESCO Nagara Ecopark and Kappahen Reserve, a place inspiring for humans and nature to thrive together. An innovative stormwater system breathes your feet is just one way NPCA supports this important goal.



It is a natural beauty landscape. It is important to utilizing living nature with the environment. It is a healthy environment with the natural beauty landscape. It is a healthy environment with the natural beauty landscape. It is a healthy environment with the natural beauty landscape.

The landscape is a natural beauty landscape. It is important to utilizing living nature with the environment. It is a healthy environment with the natural beauty landscape. It is a healthy environment with the natural beauty landscape. It is a healthy environment with the natural beauty landscape.



It is a natural beauty landscape. It is important to utilizing living nature with the environment. It is a healthy environment with the natural beauty landscape. It is a healthy environment with the natural beauty landscape. It is a healthy environment with the natural beauty landscape.

Working With Nature

USING GREEN INFRASTRUCTURE

Cave Springs lies in the UNESCO Nagara Ecopark and Kappahen Reserve, a place inspiring for humans and nature to thrive together. An innovative stormwater system breathes your feet is just one way NPCA supports this important goal.



It is a natural beauty landscape. It is important to utilizing living nature with the environment. It is a healthy environment with the natural beauty landscape. It is a healthy environment with the natural beauty landscape. It is a healthy environment with the natural beauty landscape.

The landscape is a natural beauty landscape. It is important to utilizing living nature with the environment. It is a healthy environment with the natural beauty landscape. It is a healthy environment with the natural beauty landscape. It is a healthy environment with the natural beauty landscape.



It is a natural beauty landscape. It is important to utilizing living nature with the environment. It is a healthy environment with the natural beauty landscape. It is a healthy environment with the natural beauty landscape. It is a healthy environment with the natural beauty landscape.

Working With Nature

USING GREEN INFRASTRUCTURE

Cave Springs lies in the UNESCO Nagara Ecopark and Kappahen Reserve, a place inspiring for humans and nature to thrive together. An innovative stormwater system breathes your feet is just one way NPCA supports this important goal.

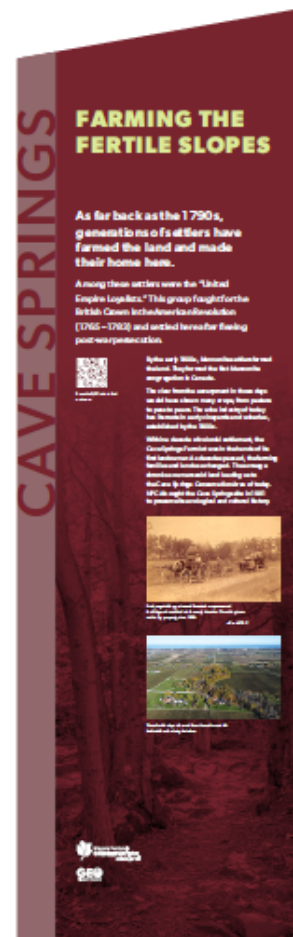
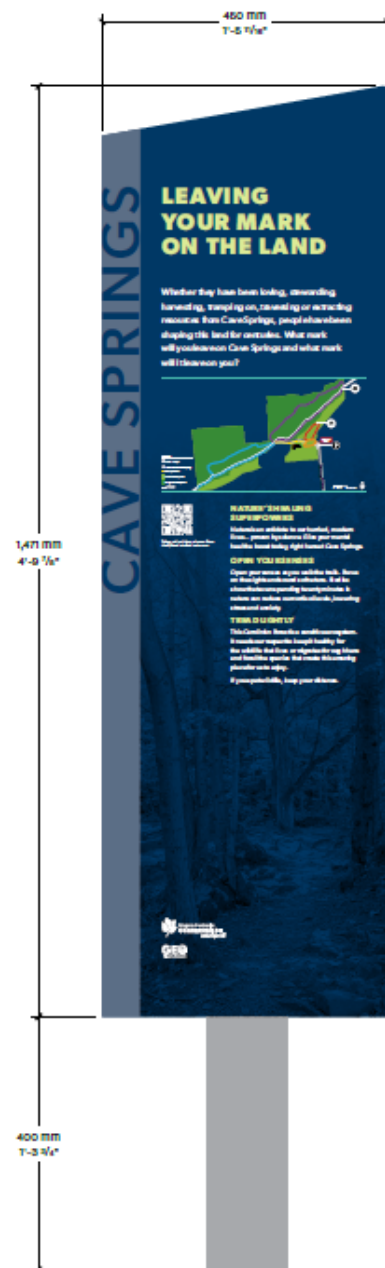


It is a natural beauty landscape. It is important to utilizing living nature with the environment. It is a healthy environment with the natural beauty landscape. It is a healthy environment with the natural beauty landscape. It is a healthy environment with the natural beauty landscape.

The landscape is a natural beauty landscape. It is important to utilizing living nature with the environment. It is a healthy environment with the natural beauty landscape. It is a healthy environment with the natural beauty landscape. It is a healthy environment with the natural beauty landscape.



It is a natural beauty landscape. It is important to utilizing living nature with the environment. It is a healthy environment with the natural beauty landscape. It is a healthy environment with the natural beauty landscape. It is a healthy environment with the natural beauty landscape.



PRELIMINARY SIGN LOCATION PLANS
Cave Springs Trail



ROCKWAY CONSERVATION AREA

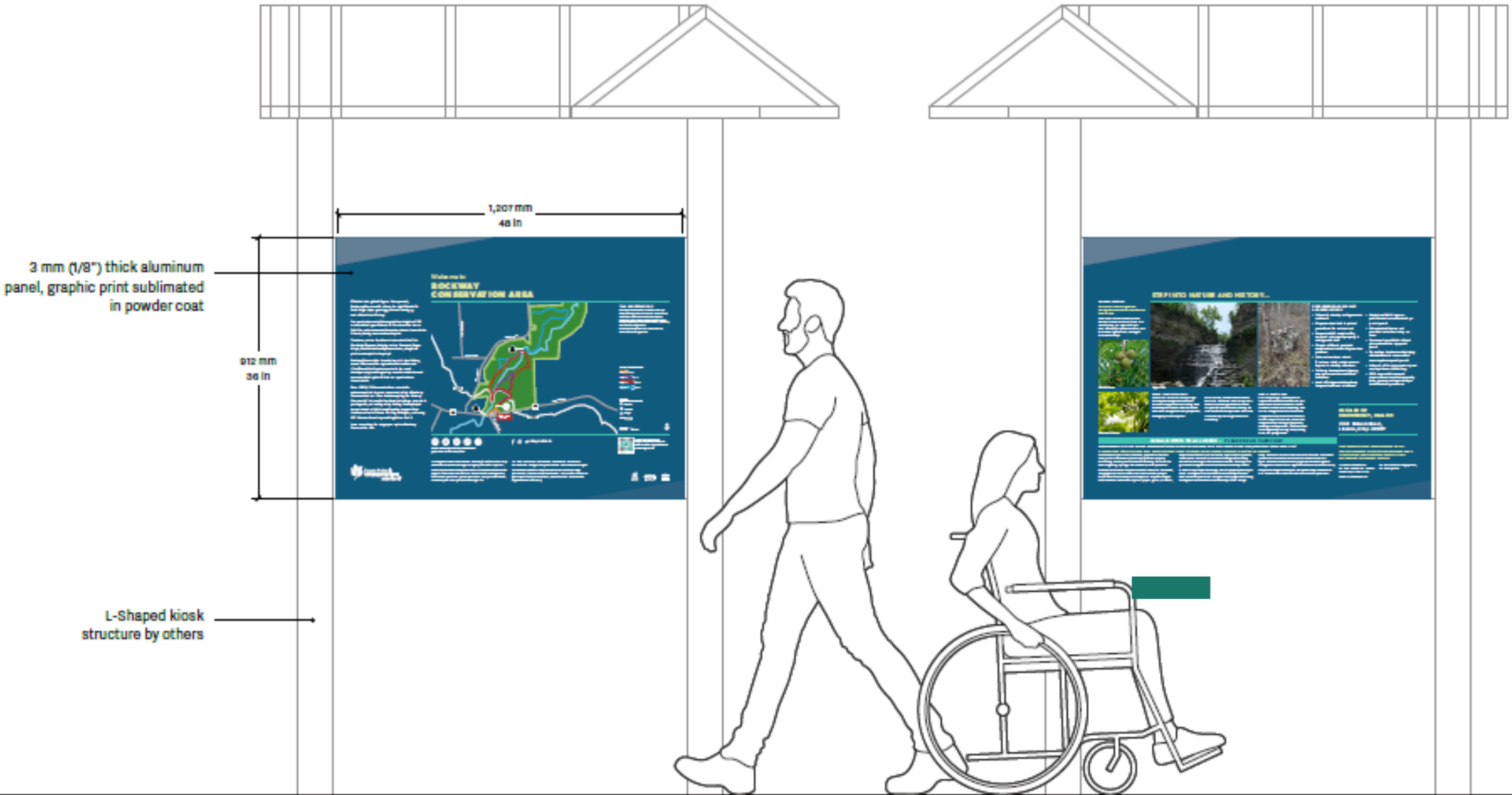




4-PANEL TRAILHEAD KIOSK



NPCA TRAILHEAD KIOSK



NPCA TRAILHEAD KIOSK

ROCKWAY

Welcome to ROCKWAY CONSERVATION AREA



TRAIL CONSIDERATIONS
This trail is a loop trail that is suitable for all ages and abilities. The trail is paved and is well-maintained. The trail is located in a beautiful area with many trees and flowers. The trail is a great place to enjoy the outdoors and to get some exercise.

TRAILHEADS
The trailhead is located at the Rockway Falls. The trailhead is a paved area with a parking lot. The trailhead is a great place to start the trail and to enjoy the view of the falls.

TRAILHEADS
The trailhead is located at the Rockway Falls. The trailhead is a paved area with a parking lot. The trailhead is a great place to start the trail and to enjoy the view of the falls.

STEP INTO NATURE AND HISTORY...

Rockway Falls
The Rockway Falls are a beautiful sight to see. The falls are located in a beautiful area with many trees and flowers. The falls are a great place to enjoy the outdoors and to get some exercise.

Rockway Trail
The Rockway Trail is a beautiful trail that is suitable for all ages and abilities. The trail is paved and is well-maintained. The trail is located in a beautiful area with many trees and flowers. The trail is a great place to enjoy the outdoors and to get some exercise.

Rockway Dam
The Rockway Dam is a beautiful dam that is suitable for all ages and abilities. The dam is paved and is well-maintained. The dam is located in a beautiful area with many trees and flowers. The dam is a great place to enjoy the outdoors and to get some exercise.

LEGAL NOTICE TO ALL USERS - PLEASE READ CAREFULLY

PLEASE BE AWARE ALL INFORMATION OF THIS NOTICE IS THE PROPERTY OF THE NIAGARA PENINSULA CONSERVATION AREA. THE NIAGARA PENINSULA CONSERVATION AREA IS NOT RESPONSIBLE FOR ANY DAMAGE TO PERSONS OR PROPERTY THAT MAY OCCUR WHILE USING THE NIAGARA PENINSULA CONSERVATION AREA. THE NIAGARA PENINSULA CONSERVATION AREA IS NOT RESPONSIBLE FOR ANY DAMAGE TO PERSONS OR PROPERTY THAT MAY OCCUR WHILE USING THE NIAGARA PENINSULA CONSERVATION AREA.



STEP INTO NATURE
ALL CONSERVATION AREAS ARE OPEN TO THE PUBLIC. THE NIAGARA PENINSULA CONSERVATION AREA IS NOT RESPONSIBLE FOR ANY DAMAGE TO PERSONS OR PROPERTY THAT MAY OCCUR WHILE USING THE NIAGARA PENINSULA CONSERVATION AREA.

TRAILHEADS
The trailhead is located at the Rockway Falls. The trailhead is a paved area with a parking lot. The trailhead is a great place to start the trail and to enjoy the view of the falls.

TRAILHEADS
The trailhead is located at the Rockway Falls. The trailhead is a paved area with a parking lot. The trailhead is a great place to start the trail and to enjoy the view of the falls.

NATURE FOR ALL, FOR ALWAYS.

THANK YOU FOR BEING
A FRIEND OF CONSERVATION



BECOME A MEMBER AND ENJOY
UNLIMITED ACCESS TO NPCA
CONSERVATION AREAS YEAR ROUND

SCAN OR VISIT
NPCA.NATUREPLUS

Visit the NPCA website for more information
at NPCA.NaturePlus.org

THIS PROJECT WAS MADE
POSSIBLE THROUGH FUNDING
SUPPORT FROM:

NIAGARA PENINSULA CONSERVATION AREA
The Niagara Peninsula Conservation Area is a beautiful area with many trees and flowers. The area is a great place to enjoy the outdoors and to get some exercise.

NIAGARA PENINSULA CONSERVATION AREA
The Niagara Peninsula Conservation Area is a beautiful area with many trees and flowers. The area is a great place to enjoy the outdoors and to get some exercise.



NPCA
The Niagara Peninsula Conservation Area is a beautiful area with many trees and flowers. The area is a great place to enjoy the outdoors and to get some exercise.

NPCA
The Niagara Peninsula Conservation Area is a beautiful area with many trees and flowers. The area is a great place to enjoy the outdoors and to get some exercise.



[illegible]

NEXT STEPS



Fabrication and installation of Cave Springs and Rockway signs in Summer 2025



Conservation Areas Management Plans



Indigenous interpretation of conservation areas



Ongoing engagement with NPCA partners

Municipalities
Geopark
Heritage committees, and more



Enhancement of additional conservation areas

Signage, wayfinding, interpretation, access, parking facilities, accessibility



Seek funding opportunities 2025+





THANK YOU / QUESTIONS?

ACHRISTIE@NPCA.CA | WWW.NPCA.CA



Niagara Peninsula
CONSERVATION
nature for all

LAKE ONTARIO COASTAL RESILIENCE PILOT PROJECT

NPCA Full Authority Board meeting

March 21, 2025

BRENDAN BUGGELN

Manager, Natural Hazard Management and Resiliency

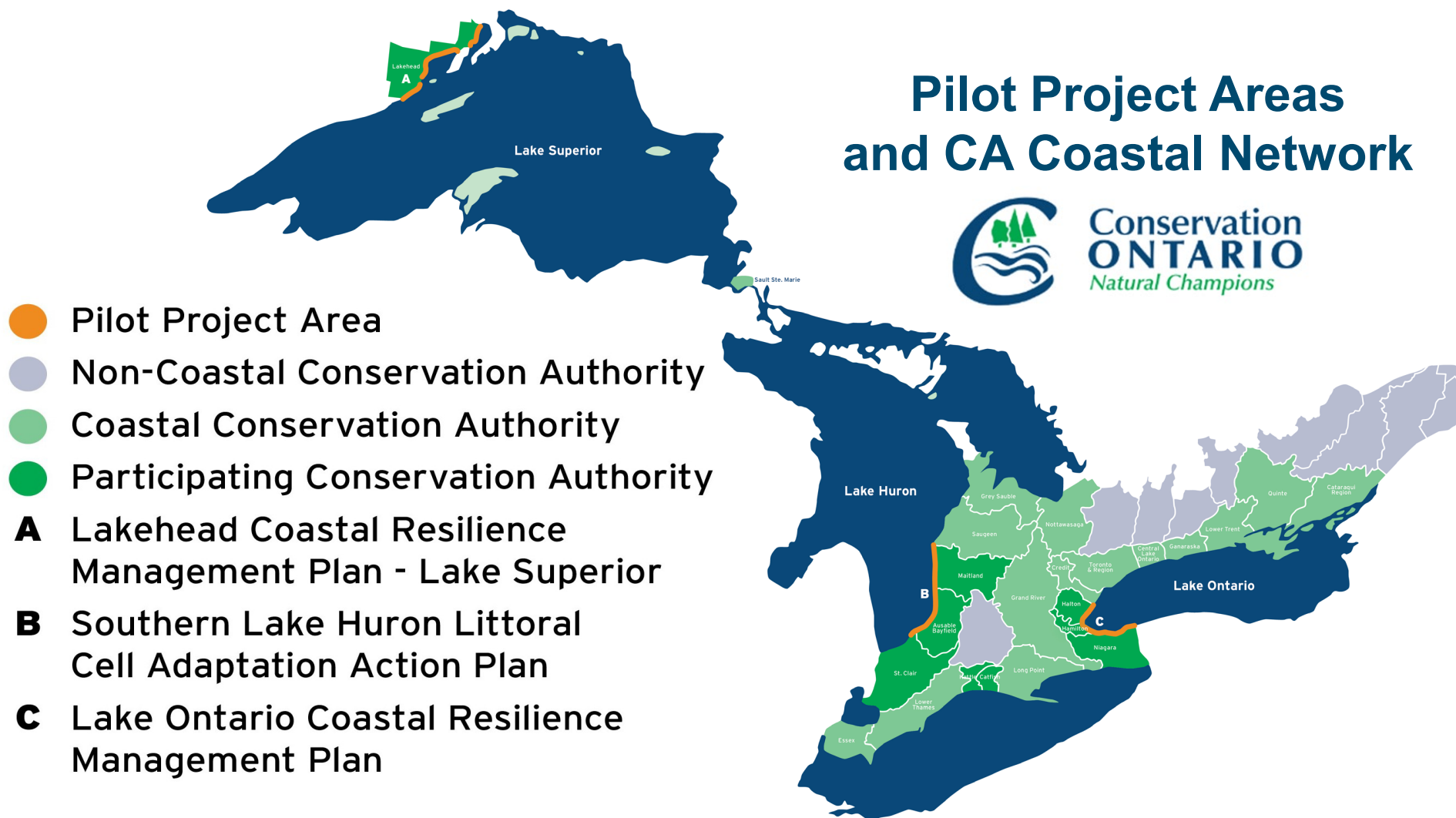


NATURAL RESOURCES CANADA CLIMATE-RESILIENT COASTAL COMMUNITIES (CRCC) PROGRAM

- Coastal regions are dynamic and highly integrated physical, social, ecological and economic systems that face a wide spectrum of linked and often cascading climate change impacts and risks that require a coordinated response
- \$4.1M (2023-2028) under the National Adaptation Action Plan
- Up to 25 pilot projects across Canada

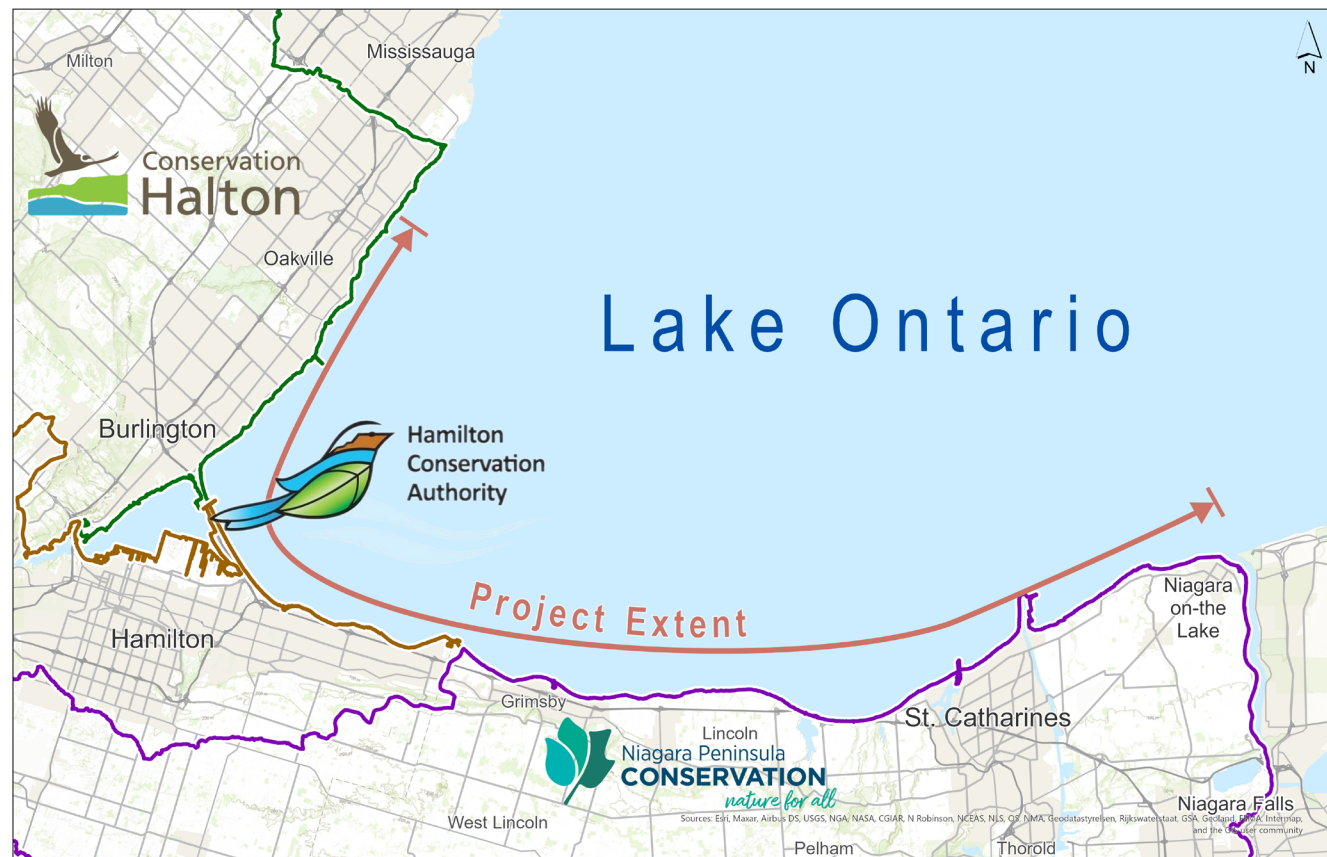


ADAPTING TO COASTAL HAZARDS ACROSS THE GREAT LAKES



GEOGRAPHIC CONTEXT

- Niagara River in Niagara-on-the-Lake to Joshua's Creek in Oakville/Mississauga
 - Excluding Hamilton Harbour
- 3 Conservation Authorities
- 10 Coastal Municipalities
- Approximately 95km in length
 - 50km in NPCA jurisdiction



MANAGING THE SHORELINE FOR RESILIENCY

- NPCA regulates shoreline hazards via a **Shoreline Management Plan**
 - Flooding, erosion, dynamic beaches
 - Last updated 2009
- CAs also required to consider “*how these risks may be affected by climate change*” (O. Reg 686/21)
- **Coastal Resilience Management Plan**
 - regional-scale pilot project;
 - enhance climate resilience;
 - accelerate adaptation; and
 - enable partners to enact coordinated, innovative actions.

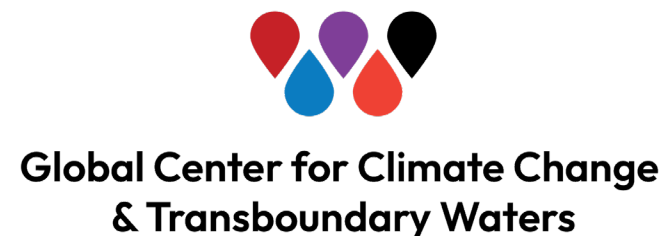


COASTAL RESILIENCE MANAGEMENT PLAN

- Climate change assessment
- Shoreline risk and vulnerability assessment
- Coastal Resiliency Plan
 - Long-term visions and goals
 - Risk mitigation strategies
 - Detailed case studies
 - Suggested policy options
 - Long term monitoring plan



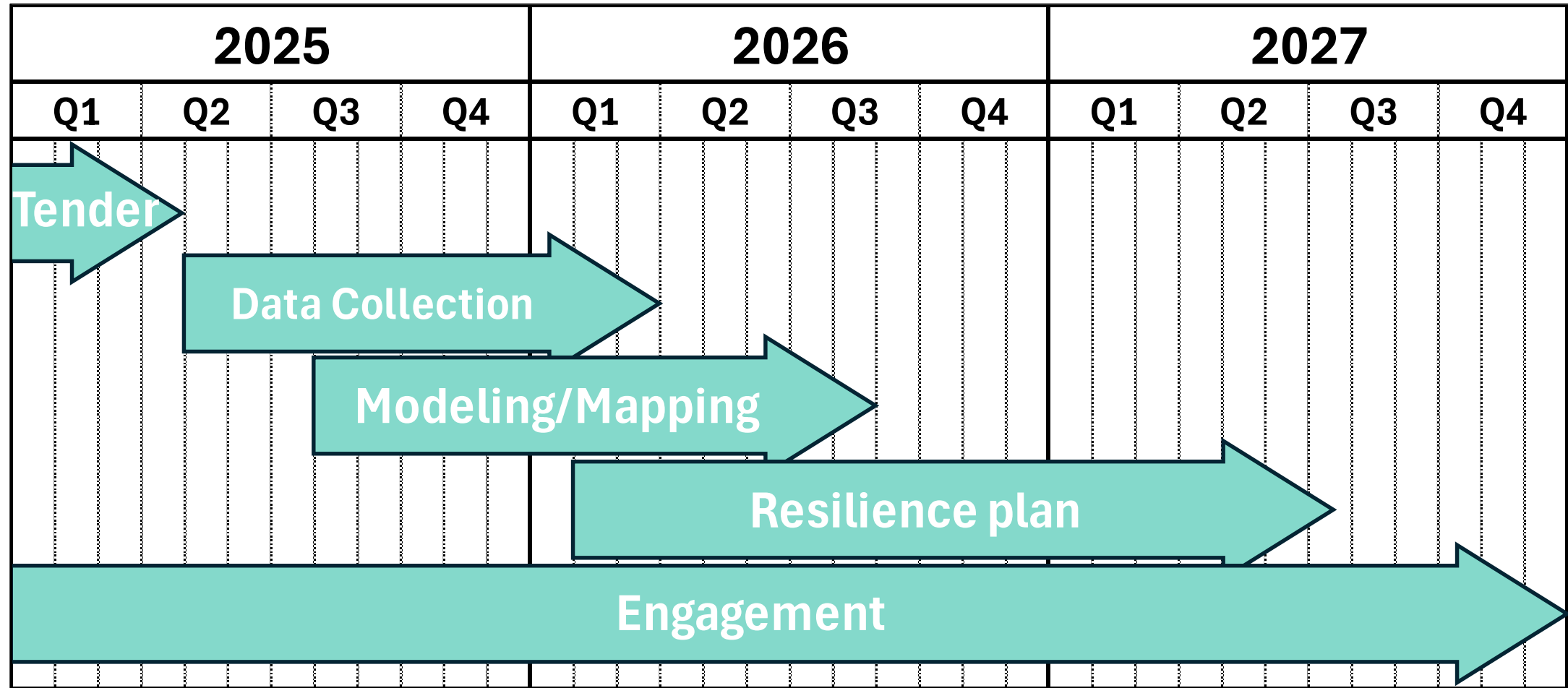
COLLABORATION IS THE KEY TO SUCCESS



Plus 10 Lake Ontario coastal municipalities, Indigenous partners and other interested parties.



PROJECT SCHEDULE





THANK YOU / QUESTIONS?

BRENDAN BUGGELN
BBUGGELN@NPCA.CA | WWW.NPCA.CA

Report To: Board of Directors

Subject: Contract Award – Trees for All Potted Stock - Hortico Nurseries Inc.

Report No: FA-08-25

Date: March 21, 2025

Recommendation:

THAT Report No. FA-08-25 RE: Contract Award – Trees for All Potted Stock **BE RECEIVED**;

AND THAT a contract award to Hortico Nurseries Inc. in the amount of \$404,578 (plus non-recoverable HST) **BE APPROVED**;

AND FURTHER THAT staff **BE AUTHORIZED** to execute all necessary documents to award the contract.

Purpose:

To award a contract to Hortico Nurseries Inc. for the provision of potted, native tree stock for the *Trees for All* program over two years, in accordance with Niagara Peninsula Conservation Authority's (NPCA) Procurement Policy.

Background:

Trees for All is a restoration-oriented tree planting initiative aimed at increasing forest cover, enhancing habitats, and improving biodiversity across urban and rural communities in the watershed, on public and private lands. *Trees for All* has two planting streams (i.e., bareroot and potted trees) supported through a cost-sharing model by a broad partnership of federal and municipal governments as well as other organizations.

In 2024, NPCA secured a multi-year federal contribution agreement through the 2 Billion Trees initiative to support planting potted trees in municipal parks and other publicly-owned/managed properties with a focus on community engagement, where possible.

Discussion:

Over the next two years of the *Trees for All* program, NPCA aims to plant over 40,000 potted trees and shrubs across the watershed, in collaboration with municipal partners. Given the high volume of native tree and shrub stock required for program delivery and the need to maximize funding allocated within the eligible agreement criteria, NPCA sought to retain a vendor to supply and deliver native trees and shrubs through a competitive request for proposals.

In February 2025, the NPCA issued a competitive request for proposals (2025-RFP-035) for a vendor to supply and deliver native trees and shrubs for the *Trees for All* program's potted plantings. The RFP process closed on March 3, 2025, with seven (7) compliant bids received and evaluated. Staff are recommending the contract be awarded to the highest ranked proponent: Hortico Nurseries Inc.

Financial Implications:

The total contract award to Hortico Nurseries Inc. is \$379,938 (plus non-recoverable HST and delivery fees) for a maximum upset limit of \$411,700 as follows:

Contract award to Hortico Nurseries Inc.	\$379,938
Delivery fees	24,640
Non-recoverable HST	7,122
TOTAL	\$411,700

The potted stream of *Trees for All* program is funded through a four-year contribution agreement with Natural Resources Canada (2 Billion Trees Initiative) in addition to cash and in-kind contributions from partners through established service-level agreements, as appropriate. The *Trees for All* 2025 operating budget is supported by program revenues that do not impact the municipal levy.

Links to Policy/Strategic Plan:

Goal 1.3: Restore and enhance natural habitat, water resources, and forest cover.

Goal 4.2: Foster relationships with the community, non-government organizations, businesses, agriculture, industry, and academic institutions for collective outcomes and impact.

Related Reports and Appendices:

Report No. FA-54-24 RE: Trees for All Update

Authored by:

Original Signed by:

Geoffrey Verkade
Senior Manager, Integrated Watershed Strategies

Reviewed by:

Original Signed by:

Natalie Green, M. Sc., PMP
Director, Watershed Strategies & Climate Change

Reviewed by:

Original Signed by:

Lise Gagnon, CPA, CGA
Director, Corporate Services

Submitted by:

Original Signed by:

Leilani Lee-Yates, BES, MSPL.RPD, MCIP, RPP
Chief Administrative Officer/Secretary-Treasurer

Report To: Board of Directors

Subject: Single Source Procurement for Natural Asset Assessment of Lake Ontario Shoreline – Green Analytics Inc.

Report No: FA-12-25

Date: March 21, 2025

Recommendation:

THAT Report No. FA-12-25 RE: Single Source Procurement for Natural Asset Assessment of Lake Ontario Shoreline – Green Analytics Inc. **BE RECEIVED;**

AND THAT a single source contract to Green Analytics Inc. in the amount of \$44,769 (plus non-recoverable HST) **BE APPROVED;**

AND THAT a contingency of 10% of \$4,477 **BE ALLOCATED** to address any unanticipated costs during the project implementation process;

AND FURTHER THAT staff **BE AUTHORIZED** to execute all necessary documents to award the contract.

Purpose:

To obtain approval for a single source, non-competitive procurement to Green Analytics Inc. to complete a natural asset inventory and valuation of the Lake Ontario shoreline, in accordance with NPCA's purchasing policies.

Background:

On April 16, 2020, the Niagara Peninsula Conservation Authority (NPCA) Board of Directors approved the Procurement Policy to provide staff direction on the purchase and procurement of goods and services for the NPCA.

Non-competitive procurements are defined as the purchase of goods and/or services from a specific vendor within two situations:

- even though there may be more than one vendor capable of delivering the same Goods or Services (known as “single source”); or
- because there are no other vendors available or able to provide the required Goods and/or Services (known as “sole source”).

As per Section 8 of the Procurement Policy, the NPCA may use a non-competitive procurement process, subject to appropriate approval authority, if any of the specified exceptions apply. Further, the policy stipulates that any non-competitive procurement over \$25,000 must have approval from the NPCA Board of Directors.

Under Section 8.2, a single source non-competitive procurement is allowed (with appropriate approval) if “only one vendor can meet the requirements of a procurement [...] to ensure compatibility with existing products”.

Discussion:

Key deliverables of the Lake Ontario Coastal Resilience Pilot Project include a shoreline inventory/characterization as well as risk and vulnerability assessments with a climate change lens and focus on nature-based solutions. These deliverables are critical for the development of a coastal resilience plan for the Lake Ontario shoreline from the mouth of the Niagara River (Niagara-on-the Lake, ON) to Joshua’s Creek (Oakville/Mississauga, ON). The inventory/characterization and assessment of traditional or hard infrastructure along the Lake Ontario shoreline and other project deliverables will proceed through a competitive request for proposals (RFP) process in 2025; however, the natural asset inventory and assessment component requires unique and specific expertise.

In 2023, through a competitive request for proposals in accordance with NPCA’s Procurement Policy, NPCA retained Green Analytics as the top-ranked proponent to complete the [NPCA Watershed Natural Asset Analysis and Valuation](#) project. The purpose of the project was to create an inventory of natural assets within the watershed, better understand the state of the assets through an ecosystem-based condition assessment and estimate the value of natural assets using replacement cost and provision of ecosystem services. The watershed-wide natural asset project was comprehensive; however, there were some identified information gaps and limitations to the geographic scope. For example, the Great Lakes shorelines within the NPCA jurisdiction were not included in the scope of the project.

Natural asset assessment and valuation is an emerging field and very few consultants have the requisite experience to perform this work, which was clearly demonstrated during the 2023 procurement of the NPCA Watershed Natural Asset Analysis and Valuation project. Staff have become well-versed with the level of effort and expertise required to perform natural asset assessment and valuation work. The proposed scope of work and quote from Green Analytics Inc. would provide NPCA with a valuable service while increasing staff capacity on additional project deliverables.

To maintain the compatibility of the information produced through the proposed Lake Ontario natural asset shoreline inventory and valuation with the existing NPCA watershed natural asset inventory, staff recommend proceeding with a non-competitive, single source procurement of services with Green Analytics Inc., as per section 8.2 of the NPCA procurement policy. The single source procurement will enable NPCA to meet the deliverables of the Lake Ontario Coastal Resilience Pilot Project and maximize the funding allocated for 2024-2025 portion of the funding contribution agreement.

Financial Implications:

The total value of the contract to Green Analytics for this project is \$44,769 (plus non-recoverable HST). Staff recommend a 10% contingency provision in the amount of \$4,477 be included in the total project budget for a maximum upset limit of \$50,113.

The project budget breakdown is as follows:

Contract award to Green Analytics Inc.	\$44,769
10% contingency	\$4,477
Non-recoverable HST	\$867
TOTAL	\$50,113

Funding for this work is supported through the Lake Ontario Coastal Resilience Pilot Project with \$1.5 million over four years allocated to NPCA for project implementation through a funding award to Conservation Ontario from Natural Resources Canada. Matching cash and in-kind contributions are being provided by NPCA through approved capital budgets and partners. The total external funding available for this portion of the project is \$50,000.

Links to Policy/Strategic Plan

Goal 1.1: Support evidence-based decision-making for climate-resilient watersheds and shorelines.

Goal 1.2: Protect people and properties from natural hazards and climate impacts.

Related Reports and Appendices:

Report No. FA-10-25 RE: Lake Ontario Coastal Resilience Pilot Project

Report No. FA-38-24 RE: Watershed Natural Assets Analysis and Valuation

Authored by:

Original Signed by:

Natalie Green, M.Sc., PMP
Director, Watershed Strategies & Climate Change

Reviewed by:

Original Signed by:

Lise Gagnon, CPA CGA
Director, Corporate Services

Submitted by:

Original Signed by:

Leilani Lee-Yates, BES, MSPL.RPD, MCIP, RPP
Chief Administrative Officer/Secretary-Treasurer