

**SOURCE PROTECTION AUTHORITY  
ON-LINE VIDEO CONFERENCE  
AND IN-PERSON MEETING**

**Carolinian Hall  
3350 Merrittville Hwy**

**Friday, April 25, 2025  
To Be Held Immediately Before the Full Authority Meeting**

**A G E N D A**

---

**CALL TO ORDER**

*The Niagara Peninsula watershed is situated within the traditional territory of the Haudenosaunee, Attiowonderonk (Neutral), and the Anishinaabeg, including the Mississaugas of the Credit—many of whom continue to live and work here today. This territory is covered by the Upper Canada Treaties (No. 3, 4, and 381) and is within the land protected by the Dish with One Spoon Wampum agreement. Today, the watershed is home to many First Nations, Métis, and Inuit peoples. Through the 2021-2031 Strategic Plan, we re-confirm our commitment to shared stewardship of natural resources and deep appreciation of Indigenous culture and history in the watershed.*

**1. APPROVAL OF AGENDA**

**2. DECLARATIONS OF CONFLICT OF INTEREST**

**3. APPROVAL OF MINUTES**

- 3.1. Approval of the Minutes of the Source Protection Authority meeting dated April 19, 2024

Page # 1

**4. CORRESPONDENCE**

**5. PRESENTATIONS**

- 5.1. Niagara Peninsula Source Protection Area Overview and Updates

Page # 4

**6. DELEGATIONS**

**7. CONSENT ITEMS**

**8. DISCUSSION ITEMS**

- 8.1. Report No. SPA-01-25: 2024 Drinking Water Source Protection Annual Progress Reporting (For Approval)

Page # 13

8.2. Report No. SPA-02-25: Issuance of Notices to Niagara Region (For Approval)

Page # 69

**9. NEW BUSINESS**

**10. CLOSED SESSION (IF REQUIRED)**

**11. ADJOURNMENT**

**SOURCE PROTECTION AUTHORITY MEETING  
Friday, April 19, 2024  
Held Immediately After the Annual General Meeting  
Carolinian Hall  
3350 Merrittville Hwy., Thorold ON  
MINUTES**

**ATTENDANCE:** J. Metcalfe, Chair  
S. Beattie  
D. Cridland  
R. Foster  
B. Grant  
D. Huson  
P. O'Neill  
M. Seaborn  
M. Tadeson

**REGRETS:** B. Clark

**NPCA STAFF:** C. Sharma, CAO / Secretary – Treasurer  
A. Christie, Director, Conservation Areas  
M. Davis, Manager, Office of the CAO & Board  
D. Deluce, Sr. Manager Planning & Infrastructure  
M. Ferrusi, Manager, People & Performance  
L. Gagnon, Director, Corporate Services  
L. Lee-Yates, Director, Planning and Development  
T. Proks, Source Water Protection & Hydrogeology Specialist  
G. Shaule, Administrative Assistant

**1. APPROVAL OF AGENDA**

Resolution No. SPA-01-24  
Moved by: Donna Cridland  
Seconded by: Patrick O'Neill

**THAT** the agenda dated April 19, 2024 **BE APPROVED.**

**CARRIED**

**2. DECLARATIONS OF CONFLICT OF INTEREST**

None.

**3. APPROVAL OF MINUTES**

**3.1. Approval of the Minutes of the Source Protection Authority meeting  
dated October 20, 2023**

Resolution No. SPA-02-24  
Moved by: Brian Grant  
Seconded by: Mark Tadeson

**THAT** the Minutes of the Source Protection Authority meeting dated October 20, 2023 **BE APPROVED**.

**CARRIED**

#### **4. CORRESPONDENCE**

**4.1. Letter from the Niagara Peninsula Source Protection Committee to the Ontario Minister of Health, the Ontario Minister of the Environment, Conservation and Parks, and the Ontario Minister of Agriculture, Food and Rural Affairs RE: 2023 Auditor General Report on Public Health Ontario Recommending Gradual Discontinuation of Free Private Drinking Water Testing.**

Discussion held regarding staff sharing correspondence with First Nations.

Resolution No. SPA-03-24  
Moved by: Robert Foster  
Seconded by: Brian Grant

**THAT** the correspondence dated April 10, 2024 from the Source Protection Committee **BE RECEIVED**.

**CARRIED**

#### **5. PRESENTATIONS**

None.

#### **6. DELEGATIONS**

None.

#### **7. CONSENT ITEMS**

None.

#### **8. DISCUSSION ITEMS**

**8.1. Report No. SPA-01-24: 2023 Drinking Water Source Protection Annual Progress Reporting**

Resolution No. SPA-04-24  
Moved by: Patrick O'Neill  
Seconded by: Brian Grant

**THAT** Report No. SPA-01-24: 2023 Drinking Water Source Protection Annual Progress Reporting **BE RECEIVED**;

**AND THAT** the Source Protection Authority for the Niagara Peninsula Source Protection Area (NPSPA) **APPROVE** the following draft final report documents, herein attached as Appendices 1-3, to be submitted to the Ministry of Environment, Conservation and Parks to meet the legislated reporting requirements:

1. NPSPA 2023 Drinking Water Source Protection (DWSP) Annual Progress Report;
2. NPSPA 2023 Policy Implementation Status Summary; and
3. NPSPA 2023 Supplemental Form.

**AND FUTHER THAT** the NPSPA 2023 Drinking Water Source Protection Annual Progress Report be **POSTED** on the Niagara Peninsula Source Protection Area website.

**CARRIED**

## **9. NEW BUSINESS**

Member Cridland informed the Members that the Niagara Children's Water Festival is scheduled from April 30 to May 3, 2024. The festival is hosted by the Niagara Region and will be held at Brock University. NPCA is a partner in the upcoming event and staff were recognized for their support in providing a valuable educational opportunity in the community.

## **10. CLOSED SESSION**

None.

## **11. ADJOURNMENT**

The Source Protection Authority meeting was adjourned at 12:25 pm.



# NIAGARA PENINSULA SOURCE PROTECTION AREA OVERVIEW AND UPDATES

Thomas Proks, P.Geo.  
Source Water Protection &  
Hydrogeology Specialist

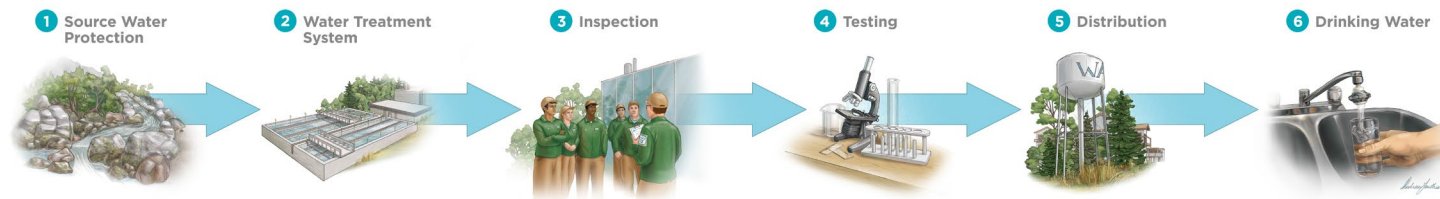


April 25, 2025



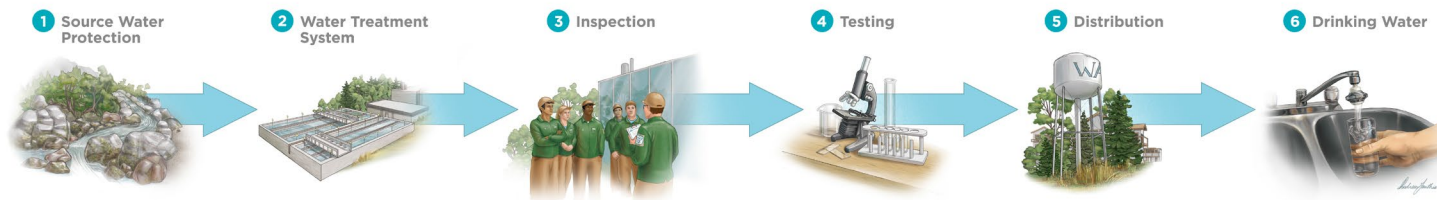
# SOURCE PROTECTION OVERVIEW

- In May of 2000, Walkerton's drinking water system became contaminated with deadly bacteria, resulting in the deaths of seven people and over 2,300 illnesses, some with lasting effects
- Justice Dennis O'Connor was commissioned to lead an inquiry into the contamination event and more broadly the safety of Ontario's drinking water
- The *Clean Water Act, 2006* came into force on July 3<sup>rd</sup>, 2007
- Establishes source protection as part of the multi-barrier approach which makes up Ontario's drinking water safety net



# SOURCE PROTECTION OVERVIEW

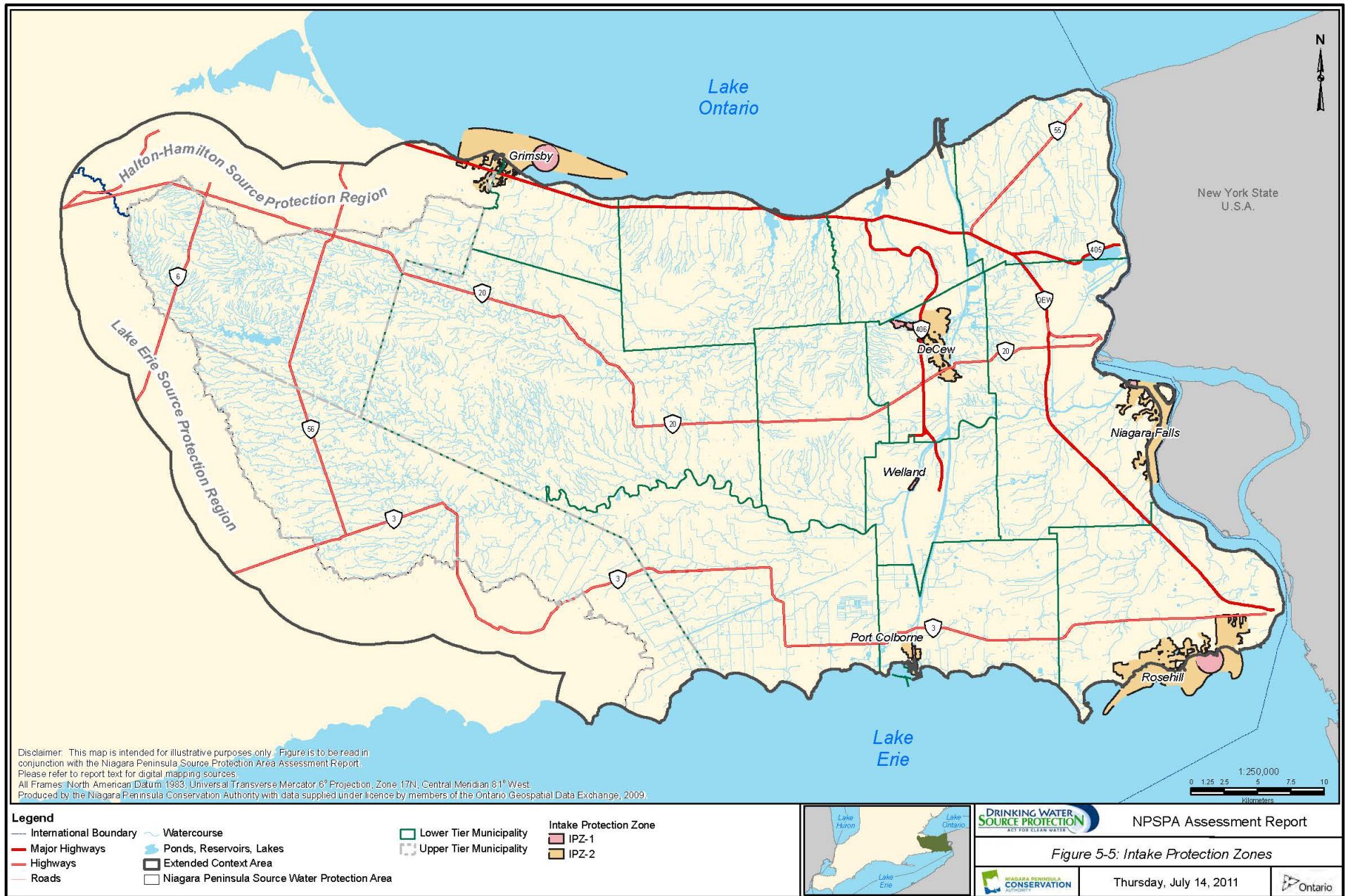
- The CWA established 38 source protection areas within the Province generally based on Conservation Authority boundaries under the Conservation Authorities Act, 1990.
- Source protection plans are now in place for municipal residential drinking water systems within the 38 source protection areas, representing approximately 90% of the population within those source protection areas.



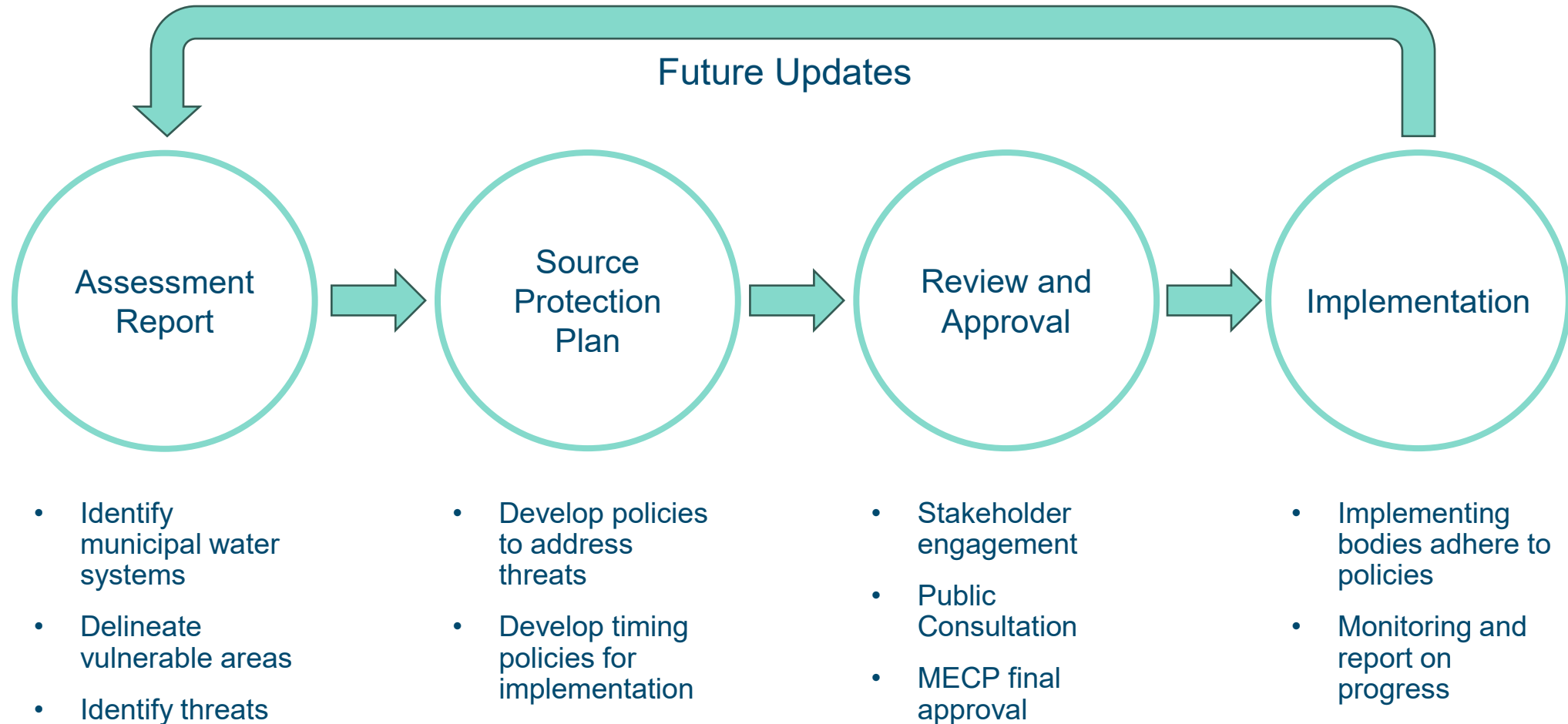








# SOURCE PROTECTION PROCESS



# WHERE ARE WE?

- Currently in the process of Early Engagement with the MECP on our Section 36 Updates.
- Our Section 36 updates mainly include new policy and existing policy revisions as a result of the Technical Rule changes in 2017 and 2021.
- Future municipal water treatment plant upgrades (i.e., Niagara Falls, Rosehill) will be captured in separate Section 34 updates.



# GOING FORWARD

- Continuing our required Clean Water Act Annual Reporting (Report SPA-01-25)
- Updating our delegation requirements to issue Notices under Ontario Regulation 287/07 when the time comes (Report SPA-02-25)
- Finalizing Assessment Report and Source Protection Plan updates based on Early Engagement with the MECP
- Conducting Public Consultation
- SPA Review and Approval before Final Submission





DRINKING WATER  
**SOURCE PROTECTION**

Our Actions Matter



THANK YOU / QUESTIONS?



[WWW.SOURCEPROTECTION-NIAGARA.CA](http://WWW.SOURCEPROTECTION-NIAGARA.CA)

[WWW.NPCA.CA](http://WWW.NPCA.CA)



---

**REPORT TO:** Source Protection Authority

**SUBJECT:** 2024 Drinking Water Source Protection Annual Progress Reporting

**REPORT NO:** SPA-01-25

**DATE:** April 25, 2025

---

**Recommendation:**

**THAT** Report No. SPA-01-25: 2024 Drinking Water Source Protection Annual Progress Reporting **BE RECEIVED**;

**AND THAT** the Source Protection Authority for the Niagara Peninsula Source Protection Area (NPSPA) **RECEIVE** the following draft final report documents approved by the Source Protection Committee on March 18, 2025:

- a. NPSPA 2024 Drinking Water Source Protection (DWSP) Annual Progress Report;
- b. NPSPA 2024 Policy Implementation Status Summary; and
- c. NPSPA 2024 Supplemental Form;

**AND THAT** the Source Protection Authority **APPROVE** that the aforementioned documents be submitted to the Ministry of the Environment, Conservation and Parks to meet the legislated reporting requirements; and

**AND FURTHER THAT** the NPSPA 2024 Drinking Water Source Protection Annual Progress Report be **POSTED** on the Niagara Peninsula Source Protection Area website.

**Purpose:**

The 2024 Drinking Water Source Protection Annual Report documents are prepared using the Electronic Annual Reporting tool provided by the Ministry of Environment, Conservation and Parks. These documents are required under the *Clean Water Act* to summarize progress made in implementing the Source Protection Plan for 2024. These documents, once approved by both the Source Protection Committee and the Source Protection Authority, are then required to be submitted to the Ministry of the Environment, Conservation and Parks by May 1, 2025.

**Background:**

The *Clean Water Act* requires implementing bodies, such as municipalities and the Ministry of the Environment, Conservation and Parks, report annually on the implementation of policies within the Source Protection Plan. Implementers provided this information to the Source Protection Authority staff by a combination of methods including email and phone.

The goal of annual reporting is to track and advise the public that the implementation of Source Protection Plans, and their respective policies, are protecting Ontario's municipal drinking water sources.

The requirement for annual progress reporting is established in the *Clean Water Act*. The Source Protection Authority is required to report using the Electronic Annual Reporting tool provided by the Ministry of the Environment, Conservation and Parks. Through the Electronic Annual Reporting tool, staff of the Source Protection Authority answer questions related to the implementation of the Source Protection Plan policies and then generate the following documents:

1. NPSPA 2024 Drinking Water Source Protection Annual Progress Report – a report which is designed for the public and is to be posted on the Niagara Peninsula Source Protection Area website. It summarizes the progress made with respect to the implementation of the Source Protection Plan;
2. NPSPA 2024 Policy Implementation Status Summary – a report which displays a summary of total policy implementation within the Niagara Peninsula Source Protection Area; and
3. NPSPA 2024 Supplemental Form – a report which contains all the detailed information required by the Ministry of the Environment, Conservation and Parks as it pertains to 2024 Drinking Water Source Protection Annual Progress Reporting.

The completed reports are due to the Ministry of the Environment, Conservation and Parks by May 1, 2025, after which the NPSPA 2024 Annual Progress Report is to be made available to the public.

### **Summary:**

In summary, the 2024 Drinking Water Source Protection Annual Progress Reporting for the Niagara Peninsula Source Protection Area has progressed well. All the policies continue to be implemented, and all significant drinking water threats are addressed.

These reports were presented to the Source Protection Committee for review at their March 18, 2025, meeting. The Source Protection Committee received and approved the information in these documents. Their comments were incorporated into the attached



draft final reports. It is the Source Protection Committee's opinion that based on the information provided, all significant drinking water threats have been addressed and all policies are implemented.

### **Related Reports and Appendices:**

Appendix 1: NPSPA 2024 Drinking Water Source Protection Annual Progress Report

Appendix 2: NPSPA 2024 Policy Implementation Status Summary

Appendix 3: NPSPA 2024 Supplemental Form

### **Prepared by:**

*Original Signed by:*

---

Thomas Proks, P.Geo.  
Source Water Protection & Hydrogeology  
Specialist

### **Reviewed by:**

*Original Signed by:*

---

David Deluce, MCIP, RPP  
Director, Planning & Development

### **Submitted by:**

*Original Signed by:*

---

Leilani Lee-Yates, BES, MSPL.RPD, MCIP, RPP  
CAO/Secretary-Treasurer

# Source Protection Annual Progress Report

## I. Introduction

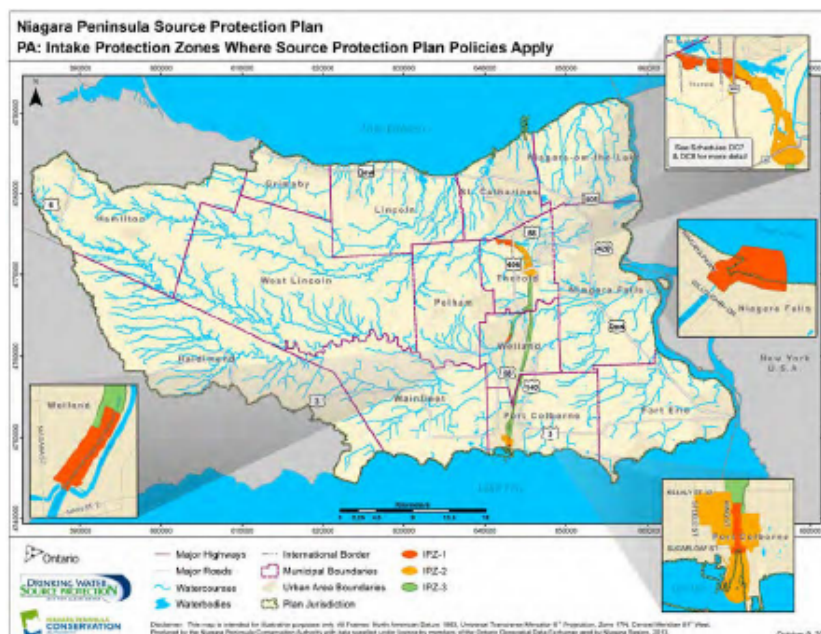
This annual progress report outlines the progress made in implementing our source protection plan for the Niagara Peninsula Source Protection Area, as required by the Clean Water Act and regulations.

The Niagara Peninsula Source Protection Plan was completed and approved by the province in December 2013. The Niagara Peninsula Source Protection Plan came into effect October 2014. The Plan is entirely implemented. The Source Protection Committee is now focused on updating and improving the Source Protection Plan.

## II. A message from your local Source Protection Committee

**P : Progressing Well/On Target – The majority of the source protection plan policies have been implemented and/or are progressing.**

The Source Protection Committee states that based on the information provided that all of the significant drinking water threats have been addressed and all of the policies are implemented.



### III. Our Watershed

To learn more, please read our assessment report(s) and source protection plan(s)

The Niagara Peninsula Source Protection Area overlies the same jurisdiction as the Niagara Peninsula Conservation Authority. With an area of 2,430 square kilometers and over 450,000 residents, it is comprised of three major drainage areas; Lake Ontario, Lake Erie, and Niagara River (including Welland River) drainage areas. NPCA contains over 180 watersheds within these drainage areas, and 117 kilometers of Great Lakes shoreline.

NPCA is marked by several prominent physiographic features that have had a major effect on development in the area. These features include the Niagara Escarpment which runs east-west across the peninsula, the relatively flat Haldimand Clay Plain which dominates the central portion of the watershed, the Iroquois Shore Sand Plain along Lake Ontario, the Fonthill Kame-Delta Complex which contains the highest point in the peninsula, and the Onondaga Escarpment which runs east-west across the peninsula just north of the Lake Erie shoreline and is of relatively low topographical relief.

The soils in the large central portion of the peninsula are dominated by clays, silty clays, and silty clay loams, characteristic of the Haldimand Clay Plain. Sands and sandy loams are found extensively along the Lake Ontario shoreline. Wetlands include bogs, fens, swamps, and marshes and encompassing almost 10% of the watershed.

Land uses can have a significant impact on the water quality and quantity. Approximately 64% is agricultural, and about 21% is rural wooded or natural. The remaining 15% is considered urban. The main urban centres include St. Catharines, Niagara Falls, and Welland. Urban growth is expected to be greatest along the Welland Canal corridor particularly in the southern portion of the peninsula.

There are six municipal water treatment plants with surface water intakes which supply over 80% of the population. There are no municipal wells. The six water treatment plants that supply municipal drinking water to residents are: Welland, DeCew Falls, Port Colborne, Niagara Falls, Grimsby and Rosehill (Fort Erie). Only Grimsby is on Lake Ontario, the remainder are on Lake Erie or a connecting channel (Welland Canal or Niagara River).

Vulnerable areas known as Intake Protection Zones (IPZs) were delineated around each municipal water treatment plant intake. The source protection program focused on drinking water threats within these IPZs. Existing and potential future threats within these IPZs were ranked and significant threats identified for policy action under the Source Protection Plan. The Source Protection Committee chose also to include transportation, storage and handling of diesel and gasoline along the Welland Canal as significant drinking water threats requiring addressing under the Source Protection Plan.

The Source Protection Plan contains policies to address significant drinking water threats for four water treatment plants, Welland, DeCew Falls, Port Colborne and Niagara Falls. No significant drinking water threats were determined for Grimsby or Rosehill (Fort Erie).

## IV. At a Glance: Progress on Source Protection Plan Implementation

### 1. Source Protection Plan Policies

P : Progressing Well/On Target

All of the policies (100%) that address significant drinking water threats have been implemented in accordance with the time lines set out in our source protection plan.

### 2. Municipal Progress: Addressing Risks on the Ground

There are a total of three (3) lower tier municipalities and one (1) upper-tier municipality in the source protection area that have vulnerable areas where significant drinking water threats apply. All three (3) of the lower tier municipalities (City of Thorold, City of Port Colborne, and City of Niagara Falls) have completed their Official Plan and Zoning By-law conformity exercises. The upper-tier municipality (Regional Municipality of Niagara) has also updated their Official Plan conformity exercise, however, the upper-tier municipality has no Zoning By-laws.

### 3. Septic Inspections

Not applicable to our source protection area.

### 4. Risk Management Plans

P : - Progressing Well/On Target

Since 2016, the Risk Management Official was able to dismiss 9 of the 24 potentially significant drinking water threats in the vicinity of the DeCew Falls IPZs identified in the Assessment Report. The remaining 15 significant drinking water threats are being managed under the required risk management plans.

## 5. Provincial Progress: Addressing Risks on the Ground

Several Ministries in Ontario are reviewing applications for new or amended and previously issued provincial approvals (e.g., Environmental Compliance Approvals issued under the Environmental Protection Act) where they have been identified as a tool in our plan to address activities that pose a significant risk to source water. The provincial approvals are either being issued, denied, amended, or revoked, where necessary to conform with plan policies in Niagara. The original policies written in Niagara provided a timeline of 3 years to complete the review and make any necessary changes to previously issued approvals. Any new or amended provincial approvals need to adhere to the Source Protection Plan policies since it took effect in October 2014. 100% of previously issued provincial approvals in the Niagara Peninsula Source Protection Area have been reviewed.

## 6. Source Protection Awareness and Change in Behaviour

Twenty-three (23) drinking water protection zone signs have been installed in our source protection area along municipal and regional roads that are in close proximity to intake protection zones. Community engagement and outreach continue to have a positive impact in our source protection region through programs like Yellow Fish Road™ and the Children's Water Festival.

Other positive impacts include the consideration that is given to vulnerable areas within the Niagara Peninsula Source Protection Area including Intake Protection Zones and Highly Vulnerable Aquifers.

## 7. Source Protection Plan Policies: Summary of Delays

Not applicable to our source protection area.

## 8. Source Water Quality: Monitoring and Actions

Not applicable.

## 9. Science-based Assessment Reports: Work Plans

No work plans were required to be implemented for our assessment report.

## 10. More from the Watershed

Future 2025 source water protection activities include:

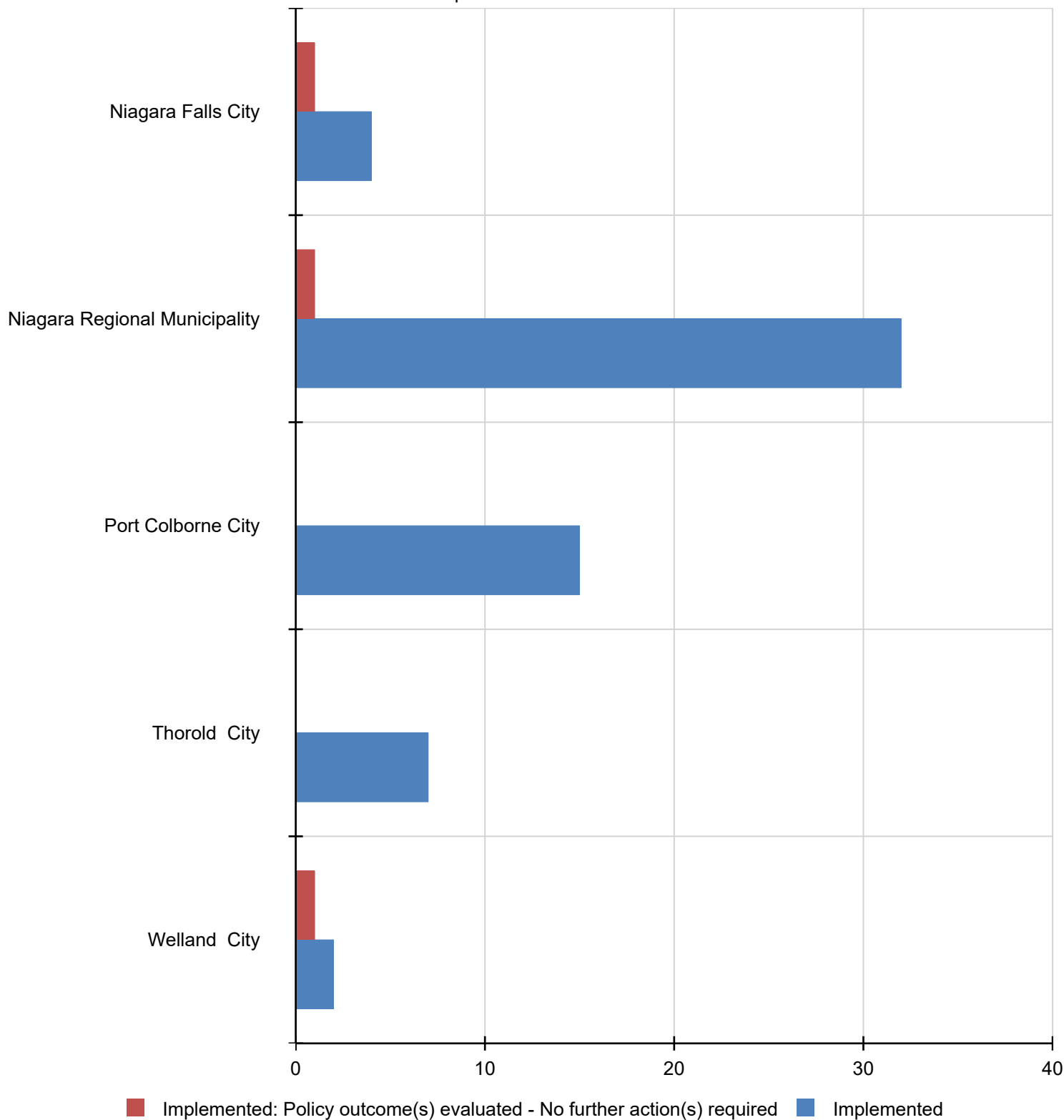
- Yellow Fish Road education and outreach within the City of Niagara Falls and the City of Port Colborne and at the Niagara Children's Water Festival

- Implementation of the work plan to update the Source Protection Plan to address: (i) required municipal updates and (ii) improving municipal supply protection

- Partnership with western Conservation Authorities on the promotion and delivery of the Drinking Water Wise Webinar Series

- Upcoming changes to municipal drinking water intakes and infrastructure projects near vulnerable areas.

Implementation Status





|                          |  |                    |                       |
|--------------------------|--|--------------------|-----------------------|
| <b>Implementing Body</b> | Municipality   | <b>Threat Type</b> | Future                |
| <b>Policy Id</b>         | NF-1   | <b>Agency</b>      | Niagara Falls City of |
| <b>Legal Effect</b>      | Conform with   |                    |                       |
| <b>Risk</b>              | Significant  |                    |                       |
| <b>Policy Tool</b>       | Land Use Planning Approaches                               |                    |                       |
| <b>Status</b>            | Implemented  |                    |                       |
| <b>Comment</b>           | Official Plan revised and Zoning By-Law have been amended. |                    |                       |

---

|                          |  |                    |                       |
|--------------------------|--|--------------------|-----------------------|
| <b>Implementing Body</b> | Municipality   | <b>Threat Type</b> | Future                |
| <b>Policy Id</b>         | NF-2   | <b>Agency</b>      | Niagara Falls City of |
| <b>Legal Effect</b>      | Conform with   |                    |                       |
| <b>Risk</b>              | Significant  |                    |                       |
| <b>Policy Tool</b>       | Land Use Planning Approaches                               |                    |                       |
| <b>Status</b>            | Implemented  |                    |                       |
| <b>Comment</b>           | Official Plan revised and Zoning By-Law have been amended. |                    |                       |

---

|                          |  |                    |                       |
|--------------------------|--|--------------------|-----------------------|
| <b>Implementing Body</b> | Municipality   | <b>Threat Type</b> | Future                |
| <b>Policy Id</b>         | NF-3   | <b>Agency</b>      | Niagara Falls City of |
| <b>Legal Effect</b>      | Conform with   |                    |                       |
| <b>Risk</b>              | Significant  |                    |                       |
| <b>Policy Tool</b>       | Land Use Planning Approaches                               |                    |                       |
| <b>Status</b>            | Implemented  |                    |                       |
| <b>Comment</b>           | Official Plan revised and Zoning By-Law have been amended. |                    |                       |

---

|                          |  |                    |                       |
|--------------------------|--|--------------------|-----------------------|
| <b>Implementing Body</b> | Municipality   | <b>Threat Type</b> | Future                |
| <b>Policy Id</b>         | NF-5   | <b>Agency</b>      | Niagara Falls City of |
| <b>Legal Effect</b>      | Conform with   |                    |                       |
| <b>Risk</b>              | Significant  |                    |                       |
| <b>Policy Tool</b>       | Land Use Planning Approaches                               |                    |                       |
| <b>Status</b>            | Implemented  |                    |                       |
| <b>Comment</b>           | Official Plan revised and Zoning By-Law have been amended. |                    |                       |

---

|                          |   |                    |                       |
|--------------------------|---|--------------------|-----------------------|
| <b>Implementing Body</b> | Municipality  | <b>Threat Type</b> | Future & Existing     |
| <b>Policy Id</b>         | NF-7  | <b>Agency</b>      | Niagara Falls City of |
| <b>Legal Effect</b>      | Conform with  |                    |                       |
| <b>Risk</b>              | Non-specific  |                    |                       |
| <b>Policy Tool</b>       | Education / Outreach  |                    |                       |
| <b>Status</b>            | Implemented: Policy outcome(s) evaluated - No further action(s) required                                    |                    |                       |
| <b>Comment</b>           | No arterial roads in NF IPZ-1, no further action required. Will review once intake relocation is completed. |                    |                       |

---

|                          |  |                    |                                  |
|--------------------------|--|--------------------|----------------------------------|
| <b>Implementing Body</b> | Municipality   | <b>Threat Type</b> | Future                           |
| <b>Policy Id</b>         | DC-1   | <b>Agency</b>      | Niagara Regional Municipality of |
| <b>Legal Effect</b>      | Conform with   |                    |                                  |
| <b>Risk</b>              | Significant  |                    |                                  |
| <b>Policy Tool</b>       | Land Use Planning Approaches                         |                    |                                  |
| <b>Status</b>            | Implemented  |                    |                                  |
| <b>Comment</b>           | Regional official plan has been revised and updated. |                    |                                  |

---

|                          |  |                    |                                  |
|--------------------------|--|--------------------|----------------------------------|
| <b>Implementing Body</b> | Municipality   | <b>Threat Type</b> | Future                           |
| <b>Policy Id</b>         | DC-2   | <b>Agency</b>      | Niagara Regional Municipality of |
| <b>Legal Effect</b>      | Conform with   |                    |                                  |
| <b>Risk</b>              | Significant  |                    |                                  |
| <b>Policy Tool</b>       | Land Use Planning Approaches                         |                    |                                  |
| <b>Status</b>            | Implemented  |                    |                                  |
| <b>Comment</b>           | Regional Official Plan has been revised and updated. |                    |                                  |

---

|                          |   |                    |                                  |
|--------------------------|---|--------------------|----------------------------------|
| <b>Implementing Body</b> | Municipality                                | <b>Threat Type</b> | Future                           |
| <b>Policy Id</b>         | DC-3  | <b>Agency</b>      | Niagara Regional Municipality of |
| <b>Legal Effect</b>      | Conform with                                |                    |                                  |
| <b>Risk</b>              | Significant                                 |                    |                                  |
| <b>Policy Tool</b>       | Land Use Planning Approaches                |                    |                                  |
| <b>Status</b>            | Implemented                                 |                    |                                  |
| <b>Comment</b>           | Regional Official Plan revised and updated. |                    |                                  |

---

|                          |   |                    |                                  |
|--------------------------|---|--------------------|----------------------------------|
| <b>Implementing Body</b> | Risk Management Official  | <b>Threat Type</b> | Future                           |
| <b>Policy Id</b>         | DC-4  | <b>Agency</b>      | Niagara Regional Municipality of |
| <b>Legal Effect</b>      | Conform with  |                    |                                  |
| <b>Risk</b>              | Significant   |                    |                                  |
| <b>Policy Tool</b>       | Section 58 Risk Management Plans  |                    |                                  |
| <b>Status</b>            | Implemented   |                    |                                  |
| <b>Comment</b>           | Fully implemented, risk management plans in place for parcels that require RMPS, remaining parcels solved through engineered solution, does not require RMPs. |                    |                                  |

---

|                          |   |                    |                                  |
|--------------------------|---|--------------------|----------------------------------|
| <b>Implementing Body</b> | Risk Management Official  | <b>Threat Type</b> | Existing                         |
| <b>Policy Id</b>         | DC-4  | <b>Agency</b>      | Niagara Regional Municipality of |
| <b>Legal Effect</b>      | Conform with  |                    |                                  |
| <b>Risk</b>              | Significant   |                    |                                  |
| <b>Policy Tool</b>       | Section 58 Risk Management Plans  |                    |                                  |
| <b>Status</b>            | Implemented   |                    |                                  |
| <b>Comment</b>           | Fully implemented, risk management plans in place for parcels that require RMPS, remaining parcels solved through engineered solution, does not require RMPs. |                    |                                  |

---

|                          |                                       |                    |                                  |
|--------------------------|---------------------------------------|--------------------|----------------------------------|
| <b>Implementing Body</b> | Municipality                          | <b>Threat Type</b> | Future & Existing                |
| <b>Policy Id</b>         | DC-5                                  | <b>Agency</b>      | Niagara Regional Municipality of |
| <b>Legal Effect</b>      | Conform with                          |                    |                                  |
| <b>Risk</b>              | Significant                           |                    |                                  |
| <b>Policy Tool</b>       | Section 59 Restricted Land Uses       |                    |                                  |
| <b>Status</b>            | Implemented                           |                    |                                  |
| <b>Comment</b>           | RMO and screening checklist in place. |                    |                                  |

---

|                          |  |                    |                                  |
|--------------------------|--|--------------------|----------------------------------|
| <b>Implementing Body</b> | Municipality                                     | <b>Threat Type</b> | Future & Existing                |
| <b>Policy Id</b>         | DC-6   | <b>Agency</b>      | Niagara Regional Municipality of |
| <b>Legal Effect</b>      | Strategic  |                    |                                  |
| <b>Risk</b>              | Significant                                      |                    |                                  |
| <b>Policy Tool</b>       | Education / Outreach                             |                    |                                  |
| <b>Status</b>            | Implemented                                      |                    |                                  |
| <b>Comment</b>           | RMO E&O in coordination with landowner contacts. |                    |                                  |

---

|                          |                      |                    |                                  |
|--------------------------|----------------------|--------------------|----------------------------------|
| <b>Implementing Body</b> | Municipality         | <b>Threat Type</b> | Future & Existing                |
| <b>Policy Id</b>         | DC-8                 | <b>Agency</b>      | Niagara Regional Municipality of |
| <b>Legal Effect</b>      | Conform with         |                    |                                  |
| <b>Risk</b>              | Non-specific         |                    |                                  |
| <b>Policy Tool</b>       | Education / Outreach |                    |                                  |
| <b>Status</b>            | Implemented          |                    |                                  |
| <b>Comment</b>           |                      |                    |                                  |

---

|                          |   |                    |                                  |
|--------------------------|---|--------------------|----------------------------------|
| <b>Implementing Body</b> | Municipality  | <b>Threat Type</b> | Future & Existing                |
| <b>Policy Id</b>         | DC-9  | <b>Agency</b>      | Niagara Regional Municipality of |
| <b>Legal Effect</b>      | Conform with  |                    |                                  |
| <b>Risk</b>              | Significant   |                    |                                  |
| <b>Policy Tool</b>       | Specify Actions to be taken to implement plan or achieve its objectives |                    |                                  |
| <b>Status</b>            | Implemented   |                    |                                  |
| <b>Comment</b>           | ERPs have been updated.   |                    |                                  |

---

|                          |  |                    |                                  |
|--------------------------|--|--------------------|----------------------------------|
| <b>Implementing Body</b> | Municipality   | <b>Threat Type</b> | Future                           |
| <b>Policy Id</b>         | NF-1   | <b>Agency</b>      | Niagara Regional Municipality of |
| <b>Legal Effect</b>      | Conform with   |                    |                                  |
| <b>Risk</b>              | Significant  |                    |                                  |
| <b>Policy Tool</b>       | Land Use Planning Approaches                         |                    |                                  |
| <b>Status</b>            | Implemented  |                    |                                  |
| <b>Comment</b>           | Regional Official Plan has been revised and updated. |                    |                                  |

---

|                          |  |                    |                                  |
|--------------------------|--|--------------------|----------------------------------|
| <b>Implementing Body</b> | Municipality   | <b>Threat Type</b> | Future                           |
| <b>Policy Id</b>         | NF-2   | <b>Agency</b>      | Niagara Regional Municipality of |
| <b>Legal Effect</b>      | Conform with   |                    |                                  |
| <b>Risk</b>              | Significant  |                    |                                  |
| <b>Policy Tool</b>       | Land Use Planning Approaches                         |                    |                                  |
| <b>Status</b>            | Implemented  |                    |                                  |
| <b>Comment</b>           | Regional Official Plan has been revised and updated. |                    |                                  |

---

|                          |  |                    |                                  |
|--------------------------|--|--------------------|----------------------------------|
| <b>Implementing Body</b> | Municipality   | <b>Threat Type</b> | Future                           |
| <b>Policy Id</b>         | NF-3   | <b>Agency</b>      | Niagara Regional Municipality of |
| <b>Legal Effect</b>      | Conform with   |                    |                                  |
| <b>Risk</b>              | Significant  |                    |                                  |
| <b>Policy Tool</b>       | Land Use Planning Approaches                         |                    |                                  |
| <b>Status</b>            | Implemented  |                    |                                  |
| <b>Comment</b>           | Regional Official Plan has been revised and updated. |                    |                                  |

---

|                          |  |                    |                                  |
|--------------------------|--|--------------------|----------------------------------|
| <b>Implementing Body</b> | Municipality   | <b>Threat Type</b> | Future                           |
| <b>Policy Id</b>         | NF-5   | <b>Agency</b>      | Niagara Regional Municipality of |
| <b>Legal Effect</b>      | Conform with   |                    |                                  |
| <b>Risk</b>              | Significant  |                    |                                  |
| <b>Policy Tool</b>       | Land Use Planning Approaches                         |                    |                                  |
| <b>Status</b>            | Implemented  |                    |                                  |
| <b>Comment</b>           | Regional Official Plan has been revised and updated. |                    |                                  |

---

|                          |  |                    |                                  |
|--------------------------|--|--------------------|----------------------------------|
| <b>Implementing Body</b> | Municipality   | <b>Threat Type</b> | Future & Existing                |
| <b>Policy Id</b>         | NF-7   | <b>Agency</b>      | Niagara Regional Municipality of |
| <b>Legal Effect</b>      | Conform with   |                    |                                  |
| <b>Risk</b>              | Non-specific   |                    |                                  |
| <b>Policy Tool</b>       | Education / Outreach   |                    |                                  |
| <b>Status</b>            | Implemented: Policy outcome(s) evaluated - No further action(s) required |                    |                                  |
| <b>Comment</b>           |  |                    |                                  |

---

|                          |  |                    |                                  |
|--------------------------|--|--------------------|----------------------------------|
| <b>Implementing Body</b> | Municipality   | <b>Threat Type</b> | Future                           |
| <b>Policy Id</b>         | PC-1   | <b>Agency</b>      | Niagara Regional Municipality of |
| <b>Legal Effect</b>      | Conform with   |                    |                                  |
| <b>Risk</b>              | Significant  |                    |                                  |
| <b>Policy Tool</b>       | Land Use Planning Approaches                         |                    |                                  |
| <b>Status</b>            | Implemented  |                    |                                  |
| <b>Comment</b>           | Regional Official Plan has been revised and updated. |                    |                                  |

---

|                          |  |                    |                                  |
|--------------------------|--|--------------------|----------------------------------|
| <b>Implementing Body</b> | Municipality   | <b>Threat Type</b> | Future & Existing                |
| <b>Policy Id</b>         | PC-10  | <b>Agency</b>      | Niagara Regional Municipality of |
| <b>Legal Effect</b>      | Conform with   |                    |                                  |
| <b>Risk</b>              | Significant  |                    |                                  |
| <b>Policy Tool</b>       | Education / Outreach   |                    |                                  |
| <b>Status</b>            | Implemented  |                    |                                  |
| <b>Comment</b>           | Niagara Snow School and Smart about Salt training and communications are provided. |                    |                                  |

---

|                          |                          |                    |                                  |
|--------------------------|--------------------------|--------------------|----------------------------------|
| <b>Implementing Body</b> | Risk Management Official | <b>Threat Type</b> | Future                           |
| <b>Policy Id</b>         | PC-13                    | <b>Agency</b>      | Niagara Regional Municipality of |
| <b>Legal Effect</b>      | Conform with             |                    |                                  |
| <b>Risk</b>              | Significant              |                    |                                  |
| <b>Policy Tool</b>       | Section 57 Prohibition   |                    |                                  |
| <b>Status</b>            | Implemented              |                    |                                  |
| <b>Comment</b>           |                          |                    |                                  |

---

|                          |   |                    |                                  |
|--------------------------|---|--------------------|----------------------------------|
| <b>Implementing Body</b> | Municipality                                | <b>Threat Type</b> | Future                           |
| <b>Policy Id</b>         | PC-15                                       | <b>Agency</b>      | Niagara Regional Municipality of |
| <b>Legal Effect</b>      | Conform with                                |                    |                                  |
| <b>Risk</b>              | Significant                                 |                    |                                  |
| <b>Policy Tool</b>       | Land Use Planning Approaches                |                    |                                  |
| <b>Status</b>            | Implemented                                 |                    |                                  |
| <b>Comment</b>           | Regional Official Plan revised and updated. |                    |                                  |

---

|                          |   |                    |                                  |
|--------------------------|---|--------------------|----------------------------------|
| <b>Implementing Body</b> | Municipality                                | <b>Threat Type</b> | Future                           |
| <b>Policy Id</b>         | PC-17                                       | <b>Agency</b>      | Niagara Regional Municipality of |
| <b>Legal Effect</b>      | Conform with                                |                    |                                  |
| <b>Risk</b>              | Significant                                 |                    |                                  |
| <b>Policy Tool</b>       | Land Use Planning Approaches                |                    |                                  |
| <b>Status</b>            | Implemented                                 |                    |                                  |
| <b>Comment</b>           | Regional Official Plan revised and updated. |                    |                                  |

---



|                          |   |                    |                                  |
|--------------------------|---|--------------------|----------------------------------|
| <b>Implementing Body</b> | Municipality                                | <b>Threat Type</b> | Future                           |
| <b>Policy Id</b>         | PC-20                                       | <b>Agency</b>      | Niagara Regional Municipality of |
| <b>Legal Effect</b>      | Conform with                                |                    |                                  |
| <b>Risk</b>              | Significant                                 |                    |                                  |
| <b>Policy Tool</b>       | Land Use Planning Approaches                |                    |                                  |
| <b>Status</b>            | Implemented                                 |                    |                                  |
| <b>Comment</b>           | Regional Official Plan revised and updated. |                    |                                  |

---

|                          |   |                    |                                  |
|--------------------------|---|--------------------|----------------------------------|
| <b>Implementing Body</b> | Municipality                                | <b>Threat Type</b> | Future                           |
| <b>Policy Id</b>         | PC-22                                       | <b>Agency</b>      | Niagara Regional Municipality of |
| <b>Legal Effect</b>      | Conform with                                |                    |                                  |
| <b>Risk</b>              | Significant                                 |                    |                                  |
| <b>Policy Tool</b>       | Land Use Planning Approaches                |                    |                                  |
| <b>Status</b>            | Implemented                                 |                    |                                  |
| <b>Comment</b>           | Regional Official Plan revised and updated. |                    |                                  |

---

|                          |                                    |                    |                                  |
|--------------------------|------------------------------------|--------------------|----------------------------------|
| <b>Implementing Body</b> | Risk Management Official           | <b>Threat Type</b> | Future                           |
| <b>Policy Id</b>         | PC-25                              | <b>Agency</b>      | Niagara Regional Municipality of |
| <b>Legal Effect</b>      | Conform with                       |                    |                                  |
| <b>Risk</b>              | Significant                        |                    |                                  |
| <b>Policy Tool</b>       | Section 58 Risk Management Plans   |                    |                                  |
| <b>Status</b>            | Implemented                        |                    |                                  |
| <b>Comment</b>           | RMO in place, no existing threats. |                    |                                  |

---

|                          |                                    |                    |                                  |
|--------------------------|------------------------------------|--------------------|----------------------------------|
| <b>Implementing Body</b> | Risk Management Official           | <b>Threat Type</b> | Existing                         |
| <b>Policy Id</b>         | PC-25                              | <b>Agency</b>      | Niagara Regional Municipality of |
| <b>Legal Effect</b>      | Conform with                       |                    |                                  |
| <b>Risk</b>              | Significant                        |                    |                                  |
| <b>Policy Tool</b>       | Section 58 Risk Management Plans   |                    |                                  |
| <b>Status</b>            | Implemented                        |                    |                                  |
| <b>Comment</b>           | RMO in place, no existing threats. |                    |                                  |

---

|                          |                                       |                    |                                  |
|--------------------------|---------------------------------------|--------------------|----------------------------------|
| <b>Implementing Body</b> | Municipality                          | <b>Threat Type</b> | Future & Existing                |
| <b>Policy Id</b>         | PC-26                                 | <b>Agency</b>      | Niagara Regional Municipality of |
| <b>Legal Effect</b>      | Conform with                          |                    |                                  |
| <b>Risk</b>              | Significant                           |                    |                                  |
| <b>Policy Tool</b>       | Section 59 Restricted Land Uses       |                    |                                  |
| <b>Status</b>            | Implemented                           |                    |                                  |
| <b>Comment</b>           | RMO and screening checklist in place. |                    |                                  |

---

|                          |  |                    |                                  |
|--------------------------|--|--------------------|----------------------------------|
| <b>Implementing Body</b> | Municipality   | <b>Threat Type</b> | Future & Existing                |
| <b>Policy Id</b>         | PC-28  | <b>Agency</b>      | Niagara Regional Municipality of |
| <b>Legal Effect</b>      | Conform with   |                    |                                  |
| <b>Risk</b>              | Non-specific   |                    |                                  |
| <b>Policy Tool</b>       | Education / Outreach   |                    |                                  |
| <b>Status</b>            | Implemented  |                    |                                  |
| <b>Comment</b>           | Niagara Region installed and maintains 10 signs at various locations through IPZs. |                    |                                  |

---

|                          |  |                    |                                  |
|--------------------------|--|--------------------|----------------------------------|
| <b>Implementing Body</b> | Municipality   | <b>Threat Type</b> | Existing                         |
| <b>Policy Id</b>         | PC-29  | <b>Agency</b>      | Niagara Regional Municipality of |
| <b>Legal Effect</b>      | Strategic  |                    |                                  |
| <b>Risk</b>              | Low, Moderate  |                    |                                  |
| <b>Policy Tool</b>       | Education / Outreach   |                    |                                  |
| <b>Status</b>            | Implemented  |                    |                                  |
| <b>Comment</b>           | Niagara Snow School and Smart about Salt training and communications provided. |                    |                                  |

---

|                          |   |                    |                                  |
|--------------------------|---|--------------------|----------------------------------|
| <b>Implementing Body</b> | Municipality  | <b>Threat Type</b> | Future & Existing                |
| <b>Policy Id</b>         | PC-30   | <b>Agency</b>      | Niagara Regional Municipality of |
| <b>Legal Effect</b>      | Conform with  |                    |                                  |
| <b>Risk</b>              | Significant   |                    |                                  |
| <b>Policy Tool</b>       | Specify Actions to be taken to implement plan or achieve its objectives |                    |                                  |
| <b>Status</b>            | Implemented   |                    |                                  |
| <b>Comment</b>           | ERPs have been updated.   |                    |                                  |

---

|                          |                                    |                    |                                  |
|--------------------------|------------------------------------|--------------------|----------------------------------|
| <b>Implementing Body</b> | Risk Management Official           | <b>Threat Type</b> | Future                           |
| <b>Policy Id</b>         | PC-5                               | <b>Agency</b>      | Niagara Regional Municipality of |
| <b>Legal Effect</b>      | Conform with                       |                    |                                  |
| <b>Risk</b>              | Significant                        |                    |                                  |
| <b>Policy Tool</b>       | Section 58 Risk Management Plans   |                    |                                  |
| <b>Status</b>            | Implemented                        |                    |                                  |
| <b>Comment</b>           | RMO in place, no existing threats. |                    |                                  |

---

|                          |                                       |                    |                                  |
|--------------------------|---------------------------------------|--------------------|----------------------------------|
| <b>Implementing Body</b> | Municipality                          | <b>Threat Type</b> | Future & Existing                |
| <b>Policy Id</b>         | PC-6                                  | <b>Agency</b>      | Niagara Regional Municipality of |
| <b>Legal Effect</b>      | Conform with                          |                    |                                  |
| <b>Risk</b>              | Significant                           |                    |                                  |
| <b>Policy Tool</b>       | Section 59 Restricted Land Uses       |                    |                                  |
| <b>Status</b>            | Implemented                           |                    |                                  |
| <b>Comment</b>           | RMO and screening checklist in place. |                    |                                  |

---

|                          |   |                    |                                  |
|--------------------------|---|--------------------|----------------------------------|
| <b>Implementing Body</b> | Municipality                                | <b>Threat Type</b> | Future                           |
| <b>Policy Id</b>         | PC-8  | <b>Agency</b>      | Niagara Regional Municipality of |
| <b>Legal Effect</b>      | Conform with                                |                    |                                  |
| <b>Risk</b>              | Significant                                 |                    |                                  |
| <b>Policy Tool</b>       | Land Use Planning Approaches                |                    |                                  |
| <b>Status</b>            | Implemented                                 |                    |                                  |
| <b>Comment</b>           | Regional Official Plan revised and updated. |                    |                                  |

---

|                          |   |                    |                                  |
|--------------------------|---|--------------------|----------------------------------|
| <b>Implementing Body</b> | Municipality                                | <b>Threat Type</b> | Future                           |
| <b>Policy Id</b>         | PC-9  | <b>Agency</b>      | Niagara Regional Municipality of |
| <b>Legal Effect</b>      | Conform with                                |                    |                                  |
| <b>Risk</b>              | Significant                                 |                    |                                  |
| <b>Policy Tool</b>       | Land Use Planning Approaches                |                    |                                  |
| <b>Status</b>            | Implemented                                 |                    |                                  |
| <b>Comment</b>           | Regional Official Plan revised and updated. |                    |                                  |

---

|                          |   |                    |                                  |
|--------------------------|---|--------------------|----------------------------------|
| <b>Implementing Body</b> | Municipality  | <b>Threat Type</b> | Future & Existing                |
| <b>Policy Id</b>         | WL-1  | <b>Agency</b>      | Niagara Regional Municipality of |
| <b>Legal Effect</b>      | Conform with  |                    |                                  |
| <b>Risk</b>              | Non-specific  |                    |                                  |
| <b>Policy Tool</b>       | Education / Outreach  |                    |                                  |
| <b>Status</b>            | Implemented   |                    |                                  |
| <b>Comment</b>           | Niagara Region installed and maintains two signs on canal crossing. |                    |                                  |

---

|                          |   |                    |                                  |
|--------------------------|---|--------------------|----------------------------------|
| <b>Implementing Body</b> | Municipality  | <b>Threat Type</b> | Future & Existing                |
| <b>Policy Id</b>         | WL-2  | <b>Agency</b>      | Niagara Regional Municipality of |
| <b>Legal Effect</b>      | Conform with  |                    |                                  |
| <b>Risk</b>              | Significant   |                    |                                  |
| <b>Policy Tool</b>       | Specify Actions to be taken to implement plan or achieve its objectives |                    |                                  |
| <b>Status</b>            | Implemented   |                    |                                  |
| <b>Comment</b>           | ERPs have been updated.   |                    |                                  |

---

|                          |   |                    |                       |
|--------------------------|---|--------------------|-----------------------|
| <b>Implementing Body</b> | Municipality  | <b>Threat Type</b> | Future & Existing     |
| <b>Policy Id</b>         | DC-9  | <b>Agency</b>      | Port Colborne City of |
| <b>Legal Effect</b>      | Conform with  |                    |                       |
| <b>Risk</b>              | Significant   |                    |                       |
| <b>Policy Tool</b>       | Specify Actions to be taken to implement plan or achieve its objectives |                    |                       |
| <b>Status</b>            | Implemented   |                    |                       |
| <b>Comment</b>           | ERPs have been updated.   |                    |                       |

---

|                          |   |                    |                       |
|--------------------------|---|--------------------|-----------------------|
| <b>Implementing Body</b> | Municipality                                  | <b>Threat Type</b> | Future                |
| <b>Policy Id</b>         | PC-1  | <b>Agency</b>      | Port Colborne City of |
| <b>Legal Effect</b>      | Conform with                                  |                    |                       |
| <b>Risk</b>              | Significant                                   |                    |                       |
| <b>Policy Tool</b>       | Land Use Planning Approaches                  |                    |                       |
| <b>Status</b>            | Implemented                                   |                    |                       |
| <b>Comment</b>           | Official Plan revised, zoning by-law updated. |                    |                       |

---

|                          |                          |                    |                       |
|--------------------------|--------------------------|--------------------|-----------------------|
| <b>Implementing Body</b> | Risk Management Official | <b>Threat Type</b> | Future                |
| <b>Policy Id</b>         | PC-13                    | <b>Agency</b>      | Port Colborne City of |
| <b>Legal Effect</b>      | Conform with             |                    |                       |
| <b>Risk</b>              | Significant              |                    |                       |
| <b>Policy Tool</b>       | Section 57 Prohibition   |                    |                       |
| <b>Status</b>            | Implemented              |                    |                       |
| <b>Comment</b>           |                          |                    |                       |

---

|                          |   |                    |                       |
|--------------------------|---|--------------------|-----------------------|
| <b>Implementing Body</b> | Municipality                                      | <b>Threat Type</b> | Future                |
| <b>Policy Id</b>         | PC-15   | <b>Agency</b>      | Port Colborne City of |
| <b>Legal Effect</b>      | Conform with                                      |                    |                       |
| <b>Risk</b>              | Significant                                       |                    |                       |
| <b>Policy Tool</b>       | Land Use Planning Approaches                      |                    |                       |
| <b>Status</b>            | Implemented                                       |                    |                       |
| <b>Comment</b>           | Official Plan revised and zoning by-laws amended. |                    |                       |

---

|                          |   |                    |                       |
|--------------------------|---|--------------------|-----------------------|
| <b>Implementing Body</b> | Municipality                                      | <b>Threat Type</b> | Future                |
| <b>Policy Id</b>         | PC-17   | <b>Agency</b>      | Port Colborne City of |
| <b>Legal Effect</b>      | Conform with                                      |                    |                       |
| <b>Risk</b>              | Significant                                       |                    |                       |
| <b>Policy Tool</b>       | Land Use Planning Approaches                      |                    |                       |
| <b>Status</b>            | Implemented                                       |                    |                       |
| <b>Comment</b>           | Official Plan updated and zoning by-laws amended. |                    |                       |

---

|                          |   |                    |                       |
|--------------------------|---|--------------------|-----------------------|
| <b>Implementing Body</b> | Municipality  | <b>Threat Type</b> | Future & Existing     |
| <b>Policy Id</b>         | PC-18   | <b>Agency</b>      | Port Colborne City of |
| <b>Legal Effect</b>      | Conform with  |                    |                       |
| <b>Risk</b>              | Significant   |                    |                       |
| <b>Policy Tool</b>       | Specify Actions to be taken to implement plan or achieve its objectives |                    |                       |
| <b>Status</b>            | Implemented   |                    |                       |
| <b>Comment</b>           | Process in place at City to address significant threat.                 |                    |                       |

---

|                          |   |                    |                       |
|--------------------------|---|--------------------|-----------------------|
| <b>Implementing Body</b> | Municipality                                      | <b>Threat Type</b> | Future                |
| <b>Policy Id</b>         | PC-20   | <b>Agency</b>      | Port Colborne City of |
| <b>Legal Effect</b>      | Conform with                                      |                    |                       |
| <b>Risk</b>              | Significant                                       |                    |                       |
| <b>Policy Tool</b>       | Land Use Planning Approaches                      |                    |                       |
| <b>Status</b>            | Implemented                                       |                    |                       |
| <b>Comment</b>           | Official Plan revised and zoning by-laws amended. |                    |                       |

---

|                          |   |                    |                       |
|--------------------------|---|--------------------|-----------------------|
| <b>Implementing Body</b> | Municipality                                      | <b>Threat Type</b> | Future                |
| <b>Policy Id</b>         | PC-22   | <b>Agency</b>      | Port Colborne City of |
| <b>Legal Effect</b>      | Conform with                                      |                    |                       |
| <b>Risk</b>              | Significant                                       |                    |                       |
| <b>Policy Tool</b>       | Land Use Planning Approaches                      |                    |                       |
| <b>Status</b>            | Implemented                                       |                    |                       |
| <b>Comment</b>           | Official Plan revised and zoning by-laws amended. |                    |                       |

---

|                          |                                       |                    |                       |
|--------------------------|---------------------------------------|--------------------|-----------------------|
| <b>Implementing Body</b> | Municipality                          | <b>Threat Type</b> | Future & Existing     |
| <b>Policy Id</b>         | PC-26                                 | <b>Agency</b>      | Port Colborne City of |
| <b>Legal Effect</b>      | Conform with                          |                    |                       |
| <b>Risk</b>              | Significant                           |                    |                       |
| <b>Policy Tool</b>       | Section 59 Restricted Land Uses       |                    |                       |
| <b>Status</b>            | Implemented                           |                    |                       |
| <b>Comment</b>           | RMO and screening checklist in place. |                    |                       |

---

|                          |  |                    |                       |
|--------------------------|--|--------------------|-----------------------|
| <b>Implementing Body</b> | Municipality   | <b>Threat Type</b> | Future & Existing     |
| <b>Policy Id</b>         | PC-28  | <b>Agency</b>      | Port Colborne City of |
| <b>Legal Effect</b>      | Conform with   |                    |                       |
| <b>Risk</b>              | Non-specific   |                    |                       |
| <b>Policy Tool</b>       | Education / Outreach   |                    |                       |
| <b>Status</b>            | Implemented  |                    |                       |
| <b>Comment</b>           | Niagara Region installed and maintains 10 signs at various locations through IPZs. |                    |                       |

---



|                          |   |                    |                       |
|--------------------------|---|--------------------|-----------------------|
| <b>Implementing Body</b> | Municipality  | <b>Threat Type</b> | Future & Existing     |
| <b>Policy Id</b>         | PC-30   | <b>Agency</b>      | Port Colborne City of |
| <b>Legal Effect</b>      | Conform with  |                    |                       |
| <b>Risk</b>              | Significant   |                    |                       |
| <b>Policy Tool</b>       | Specify Actions to be taken to implement plan or achieve its objectives |                    |                       |
| <b>Status</b>            | Implemented   |                    |                       |
| <b>Comment</b>           | ERPs have been updated.   |                    |                       |

---

|                          |                                       |                    |                       |
|--------------------------|---------------------------------------|--------------------|-----------------------|
| <b>Implementing Body</b> | Municipality                          | <b>Threat Type</b> | Future & Existing     |
| <b>Policy Id</b>         | PC-6                                  | <b>Agency</b>      | Port Colborne City of |
| <b>Legal Effect</b>      | Conform with                          |                    |                       |
| <b>Risk</b>              | Significant                           |                    |                       |
| <b>Policy Tool</b>       | Section 59 Restricted Land Uses       |                    |                       |
| <b>Status</b>            | Implemented                           |                    |                       |
| <b>Comment</b>           | RMO and screening checklist in place. |                    |                       |

---

|                          |   |                    |                       |
|--------------------------|---|--------------------|-----------------------|
| <b>Implementing Body</b> | Municipality                                      | <b>Threat Type</b> | Future                |
| <b>Policy Id</b>         | PC-8  | <b>Agency</b>      | Port Colborne City of |
| <b>Legal Effect</b>      | Conform with                                      |                    |                       |
| <b>Risk</b>              | Significant                                       |                    |                       |
| <b>Policy Tool</b>       | Land Use Planning Approaches                      |                    |                       |
| <b>Status</b>            | Implemented                                       |                    |                       |
| <b>Comment</b>           | Official plan revised and zoning by-laws amended. |                    |                       |

---

|                          |   |                    |                       |
|--------------------------|---|--------------------|-----------------------|
| <b>Implementing Body</b> | Municipality                                      | <b>Threat Type</b> | Future                |
| <b>Policy Id</b>         | PC-9  | <b>Agency</b>      | Port Colborne City of |
| <b>Legal Effect</b>      | Conform with                                      |                    |                       |
| <b>Risk</b>              | Significant                                       |                    |                       |
| <b>Policy Tool</b>       | Land Use Planning Approaches                      |                    |                       |
| <b>Status</b>            | Implemented                                       |                    |                       |
| <b>Comment</b>           | Official Plan updated and zoning by-laws amended. |                    |                       |

---

|                          |   |                    |                       |
|--------------------------|---|--------------------|-----------------------|
| <b>Implementing Body</b> | Municipality  | <b>Threat Type</b> | Future & Existing     |
| <b>Policy Id</b>         | WL-2  | <b>Agency</b>      | Port Colborne City of |
| <b>Legal Effect</b>      | Conform with  |                    |                       |
| <b>Risk</b>              | Significant   |                    |                       |
| <b>Policy Tool</b>       | Specify Actions to be taken to implement plan or achieve its objectives |                    |                       |
| <b>Status</b>            | Implemented   |                    |                       |
| <b>Comment</b>           | ERPs have been updated.   |                    |                       |

---

|                          |   |                    |                 |
|--------------------------|---|--------------------|-----------------|
| <b>Implementing Body</b> | Municipality                                  | <b>Threat Type</b> | Future          |
| <b>Policy Id</b>         | DC-1  | <b>Agency</b>      | Thorold City of |
| <b>Legal Effect</b>      | Conform with                                  |                    |                 |
| <b>Risk</b>              | Significant                                   |                    |                 |
| <b>Policy Tool</b>       | Land Use Planning Approaches                  |                    |                 |
| <b>Status</b>            | Implemented                                   |                    |                 |
| <b>Comment</b>           | Official plan revised. Zoning By-Law updated. |                    |                 |

---

|                          |  |                    |                 |
|--------------------------|--|--------------------|-----------------|
| <b>Implementing Body</b> | Municipality   | <b>Threat Type</b> | Future          |
| <b>Policy Id</b>         | DC-2   | <b>Agency</b>      | Thorold City of |
| <b>Legal Effect</b>      | Conform with   |                    |                 |
| <b>Risk</b>              | Significant  |                    |                 |
| <b>Policy Tool</b>       | Land Use Planning Approaches                           |                    |                 |
| <b>Status</b>            | Implemented  |                    |                 |
| <b>Comment</b>           | Official Plan has been revised. Zoning By-law updated. |                    |                 |

---

|                          |  |                    |                 |
|--------------------------|--|--------------------|-----------------|
| <b>Implementing Body</b> | Municipality                                     | <b>Threat Type</b> | Future          |
| <b>Policy Id</b>         | DC-3   | <b>Agency</b>      | Thorold City of |
| <b>Legal Effect</b>      | Conform with                                     |                    |                 |
| <b>Risk</b>              | Significant                                      |                    |                 |
| <b>Policy Tool</b>       | Land Use Planning Approaches                     |                    |                 |
| <b>Status</b>            | Implemented                                      |                    |                 |
| <b>Comment</b>           | Official Plan revised and Zoning By-Law updated. |                    |                 |

---

|                          |  |                    |                   |
|--------------------------|--|--------------------|-------------------|
| <b>Implementing Body</b> | Municipality   | <b>Threat Type</b> | Future & Existing |
| <b>Policy Id</b>         | DC-5   | <b>Agency</b>      | Thorold City of   |
| <b>Legal Effect</b>      | Conform with   |                    |                   |
| <b>Risk</b>              | Significant  |                    |                   |
| <b>Policy Tool</b>       | Section 59 Restricted Land Uses                        |                    |                   |
| <b>Status</b>            | Implemented  |                    |                   |
| <b>Comment</b>           | Official Plan revised, Zoning By-Law has been updated. |                    |                   |

---

|                          |                      |                    |                   |
|--------------------------|----------------------|--------------------|-------------------|
| <b>Implementing Body</b> | Municipality         | <b>Threat Type</b> | Future & Existing |
| <b>Policy Id</b>         | DC-8                 | <b>Agency</b>      | Thorold City of   |
| <b>Legal Effect</b>      | Conform with         |                    |                   |
| <b>Risk</b>              | Non-specific         |                    |                   |
| <b>Policy Tool</b>       | Education / Outreach |                    |                   |
| <b>Status</b>            | Implemented          |                    |                   |
| <b>Comment</b>           |                      |                    |                   |

---

|                          |   |                    |                   |
|--------------------------|---|--------------------|-------------------|
| <b>Implementing Body</b> | Municipality  | <b>Threat Type</b> | Future & Existing |
| <b>Policy Id</b>         | DC-9  | <b>Agency</b>      | Thorold City of   |
| <b>Legal Effect</b>      | Conform with  |                    |                   |
| <b>Risk</b>              | Significant   |                    |                   |
| <b>Policy Tool</b>       | Specify Actions to be taken to implement plan or achieve its objectives |                    |                   |
| <b>Status</b>            | Implemented   |                    |                   |
| <b>Comment</b>           | ERPs have been updated.   |                    |                   |

---

|                          |   |                    |                   |
|--------------------------|---|--------------------|-------------------|
| <b>Implementing Body</b> | Municipality  | <b>Threat Type</b> | Future & Existing |
| <b>Policy Id</b>         | WL-2  | <b>Agency</b>      | Thorold City of   |
| <b>Legal Effect</b>      | Conform with  |                    |                   |
| <b>Risk</b>              | Significant   |                    |                   |
| <b>Policy Tool</b>       | Specify Actions to be taken to implement plan or achieve its objectives |                    |                   |
| <b>Status</b>            | Implemented   |                    |                   |
| <b>Comment</b>           | ERPs have been updated.   |                    |                   |

---

|                          |   |                    |                   |
|--------------------------|---|--------------------|-------------------|
| <b>Implementing Body</b> | Municipality  | <b>Threat Type</b> | Future & Existing |
| <b>Policy Id</b>         | DC-9  | <b>Agency</b>      | Welland City of   |
| <b>Legal Effect</b>      | Conform with  |                    |                   |
| <b>Risk</b>              | Significant   |                    |                   |
| <b>Policy Tool</b>       | Specify Actions to be taken to implement plan or achieve its objectives |                    |                   |
| <b>Status</b>            | Implemented   |                    |                   |
| <b>Comment</b>           | ERPs have been updated.   |                    |                   |

---

|                          |  |                    |                   |
|--------------------------|--|--------------------|-------------------|
| <b>Implementing Body</b> | Municipality   | <b>Threat Type</b> | Future & Existing |
| <b>Policy Id</b>         | WL-1   | <b>Agency</b>      | Welland City of   |
| <b>Legal Effect</b>      | Conform with   |                    |                   |
| <b>Risk</b>              | Non-specific   |                    |                   |
| <b>Policy Tool</b>       | Education / Outreach   |                    |                   |
| <b>Status</b>            | Implemented: Policy outcome(s) evaluated - No further action(s) required |                    |                   |
| <b>Comment</b>           | No arterial roads for signs to be installed.                             |                    |                   |

---

|                          |   |                    |                   |
|--------------------------|---|--------------------|-------------------|
| <b>Implementing Body</b> | Municipality  | <b>Threat Type</b> | Future & Existing |
| <b>Policy Id</b>         | WL-2  | <b>Agency</b>      | Welland City of   |
| <b>Legal Effect</b>      | Conform with  |                    |                   |
| <b>Risk</b>              | Significant   |                    |                   |
| <b>Policy Tool</b>       | Specify Actions to be taken to implement plan or achieve its objectives |                    |                   |
| <b>Status</b>            | Implemented   |                    |                   |
| <b>Comment</b>           | ERPs have been updated.   |                    |                   |

---



# Source Water Protection Annual Report

## 2024 - Supplemental Form

### SPR - Niagara Peninsula

Appendix 3 to Report No. SPA-01-25

| Report Id   | Completed | Question  |
|---|-----------|---|
| 10  | True      | As applicable to your source protection region/area, indicate if all relevant implementing bodies submitted a status update/annual report to the source protection authority for the previous reporting year. If "No" is selected for any implementing body(ies), then please complete the Comments field below with details including the name of the specific implementing body along with an explanation, if available, for not submitting a status update/annual report as required by a monitoring policy. *NOTE: Where a listed implementing body(ies) is not applicable/relevant to your source protection region/area, then simply select "No" and explain that it is not an applicable implementing body in your source protection region/area in the Comments field text box. |
| <b>Response</b>   |           | <b>Answer</b>   |
| Risk Management Official  |           | Yes   |
| Municipality  |           | Yes   |
| Conservation Authority  |           | Yes   |
| Local Health Unit   |           | No  |
| MECP - Waste Disposal Sites - Landfilling and Storage             |           | Yes   |
| MECP - Wastewater/Sewage Works                                    |           | Yes   |
| MECP - Pesticides   |           | Yes   |
| MECP - Hauled Sewage/Biosolids                                    |           | Yes   |
| MECP - Hauled Sewage/Biosolids Inspections                        |           | Yes   |
| MECP - Permit to Take Water                                       |           | Yes   |
| MECP - Permit to Take Water Inspections                           |           | Yes   |
| MECP - Municipal Residential Drinking Water Systems               |           | Yes   |
| MECP - Municipal Residential Drinking Water Systems Inspections   |           | Yes   |
| MECP - Source Protection  |           | Yes   |
| MECP - Waste Disposal Sites - Landfilling and Storage Inspections |           | Yes   |
| MECP - Wastewater/Sewage Works Inspections                        |           | Yes   |
| MECP - Conditions Sites   |           | Yes   |
| MECP - NMA - ASM and NASM Inspections                             |           | Yes   |
| MECP - Environmental Monitoring                                   |           | Yes   |
| MECP - Fuel   |           | Yes   |
| MECP - Great Lakes  |           | Yes   |



# Source Water Protection Annual Report

## 2024 - Supplemental Form

### SPR - Niagara Peninsula

|   |     |
|---|-----|
| MECP - Spills Response                                      | Yes |
| MECP - Wells  | Yes |
| OMAFRA  | Yes |
| MNRF  | No  |
| MTO   | Yes |
| MMAH  | No  |
| MGCS-TSSA   | No  |
| MENDM   | No  |
| Provincial Board/Commission                                 | No  |
| Federal Departments/Agencies/Commissions/Crown Corporations | Yes |
| Private Entity/Company                                      | No  |
| Association/Organization                                    | No  |

**Comment:** For "No" answers, implementing body does not apply in Niagara Peninsula Source Protection Area.



# Source Water Protection Annual Report

## 2024 - Supplemental Form

### SPR - Niagara Peninsula

| Report Id | Completed | Question   | Category   |
|-----------|-----------|--|--|
| 20        | True      | Did the Source Protection Authority indicate the status of all threat policies as contained in their source protection plan? Please provide details in the response field text box in the Policy Interface for policies with a "No Progress Made" and "No information available/no response received" implementation status especially for legally-binding policies that address significant drinking water threat activities and for any moderate/low threat policies that use prescribed instruments and Planning Act tools. | Implementation status of source protection plan policies |
| Answer:   |           | Yes  |  |

Comment:

| Report Id | Completed | Question  | Category                         |
|-----------|-----------|---|----------------------------------|
| 21        | True      | Did the source protection authority(ies) confirm the accuracy of the implementation status of all threat policies as contained in their source protection plan and located on the policy interface database for the current reporting year? | Monitoring Policy Implementation |
| Answer:   |           | Yes   |                                  |

Comment:

| Report Id | Completed | Question  | Category                         |
|-----------|-----------|---|----------------------------------|
| 22        | True      | Did all source protection authority(ies) confirm that if a policy is significant and legally binding and has not been implemented by a person or a body by the implementation date specified in the policy, that there are written comments that include a description of the failure and the reasons for the failure as per O.Reg 287/07 s.52(1) 1.? | Monitoring Policy Implementation |
| Answer:   |           | Yes   |                                  |

Comment:





# Source Water Protection Annual Report

## 2024 - Supplemental Form

### SPR - Niagara Peninsula

| Report Id        | Completed        | Question  |              |                  |   |   |
|------------------|------------------|---|--------------|------------------|---|---|
| 30               | True             | Number of risk management plans agreed to or established within the source protection area/region (to address existing and future threats) in this reporting period (i.e., annual total). |              |                  |   |   |
|                  |                  | <table><tr><th>Current Year</th><th>Cumulative Count</th></tr><tr><td>0</td><td>2</td></tr></table>   | Current Year | Cumulative Count | 0 | 2 |
| Current Year     | Cumulative Count |   |              |                  |   |   |
| 0                | 2                |   |              |                  |   |   |
| Provincial Total |                  | 02  |              |                  |   |   |
| Comment:         |                  |   |              |                  |   |   |

| Report Id        | Completed        | Question   |              |                  |   |   |
|------------------|------------------|--|--------------|------------------|---|---|
| 31               | True             | Number of properties (i.e., parcels) with risk management plans agreed to or established in this reporting period. |              |                  |   |   |
|                  |                  | <table><tr><th>Current Year</th><th>Cumulative Count</th></tr><tr><td>0</td><td>5</td></tr></table>                | Current Year | Cumulative Count | 0 | 5 |
| Current Year     | Cumulative Count |  |              |                  |   |   |
| 0                | 5                |  |              |                  |   |   |
| Provincial Total |                  | 05   |              |                  |   |   |
| Comment:         |                  |  |              |                  |   |   |

| Report Id        | Completed        | Question   |              |                  |   |    |
|------------------|------------------|--|--------------|------------------|---|----|
| 32               | True             | How many existing* significant drinking water threats have been managed through the established risk management plans in this reporting period (* meaning engaged in OR enumerated as existing significant threats)? |              |                  |   |    |
|                  |                  | <table><tr><th>Current Year</th><th>Cumulative Count</th></tr><tr><td>0</td><td>15</td></tr></table>   | Current Year | Cumulative Count | 0 | 15 |
| Current Year     | Cumulative Count |  |              |                  |   |    |
| 0                | 15               |  |              |                  |   |    |
| Provincial Total |                  | 015  |              |                  |   |    |
| Comment:         |                  |  |              |                  |   |    |



# Source Water Protection Annual Report

## 2024 - Supplemental Form

### SPR - Niagara Peninsula

| Report Id        | Completed        | Question  |              |                  |   |   |
|------------------|------------------|---|--------------|------------------|---|---|
| 40               | True             | How many section 59 notices were issued in this reporting period for activities to which neither a prohibition (section 57) nor a risk management plan (section 58) policy applied, as per ss. 59(2)(a) of the Clean Water Act? |              |                  |   |   |
|                  |                  | <table><tr><th>Current Year</th><th>Cumulative Count</th></tr><tr><td>0</td><td>0</td></tr></table>   | Current Year | Cumulative Count | 0 | 0 |
| Current Year     | Cumulative Count |   |              |                  |   |   |
| 0                | 0                |   |              |                  |   |   |
| Provincial Total |                  | 0   |              |                  |   |   |
| Comment:         |                  |   |              |                  |   |   |

| Report Id        | Completed        | Question   |              |                  |   |   |
|------------------|------------------|--|--------------|------------------|---|---|
| 41               | True             | How many section 59 notices were issued in this reporting period for activities to which a risk management plan (section 58) policy applied, as per ss. 59(2)(b) of the Clean Water Act? |              |                  |   |   |
|                  |                  | <table><tr><th>Current Year</th><th>Cumulative Count</th></tr><tr><td>0</td><td>0</td></tr></table>  | Current Year | Cumulative Count | 0 | 0 |
| Current Year     | Cumulative Count |  |              |                  |   |   |
| 0                | 0                |  |              |                  |   |   |
| Provincial Total |                  | 0  |              |                  |   |   |
| Comment:         |                  |  |              |                  |   |   |

| Report Id        | Completed   | Question  |              |                  |   |   |
|------------------|---|---|--------------|------------------|---|---|
| 61               | True  | State the total number of inspections (including any follow-up site visits) that were carried out for activities (existing or future) that are prohibited under section 57 of the Clean Water Act in this reporting period. If no inspections were conducted in the previous calendar year, please explain. |              |                  |   |   |
|                  |   | <table><tr><th>Current Year</th><th>Cumulative Count</th></tr><tr><td>0</td><td>7</td></tr></table>   | Current Year | Cumulative Count | 0 | 7 |
| Current Year     | Cumulative Count  |   |              |                  |   |   |
| 0                | 7   |   |              |                  |   |   |
| Provincial Total |   | 07  |              |                  |   |   |
| Comment:         | Section 57 prohibition applies to aircraft de-icing in Port Colborne, no airport exists in Port Colborne therefore an inspection to ensure prohibition is not required. |   |              |                  |   |   |



# Source Water Protection Annual Report

## 2024 - Supplemental Form

### SPR - Niagara Peninsula

| Report Id | Completed | Question   |
|-----------|-----------|--|
| 62        | True      | Among the inspections conducted for section 57, how many showed that activities were taking place on the landscape even though they were prohibited (i.e., in contravention) under section 57 of the Clean Water Act in this reporting period? |

| Current Year | Cumulative Count |
|--------------|------------------|
|--------------|------------------|

|   |   |
|---|---|
| 0 | 0 |
|---|---|

|                  |   |   |
|------------------|---|---|
| Provincial Total | 0 | 0 |
|------------------|---|---|

Comment:

| Report Id | Completed | Question  |
|-----------|-----------|---|
| 63        | True      | How many new properties were identified with s.57 prohibited activities during the reporting year (do not include properties established outside of this reporting year)? |

| Current Year | Cumulative Count |
|--------------|------------------|
|--------------|------------------|

|   |   |
|---|---|
| 0 | 0 |
|---|---|

|                  |   |   |
|------------------|---|---|
| Provincial Total | 0 | 0 |
|------------------|---|---|

Comment:

| Report Id | Completed | Question   |
|-----------|-----------|--|
| 70        | True      | How many existing significant drinking water threats have been prohibited as a result of section 57 prohibitions in this reporting period? |

| Current Year | Cumulative Count |
|--------------|------------------|
|--------------|------------------|

|   |   |
|---|---|
| 0 | 1 |
|---|---|

|                  |   |   |
|------------------|---|---|
| Provincial Total | 0 | 1 |
|------------------|---|---|

Comment:



# Source Water Protection Annual Report

## 2024 - Supplemental Form

### SPR - Niagara Peninsula

| Report Id        | Completed        | Question   |              |                  |   |    |                  |   |
|------------------|------------------|--|--------------|------------------|---|----|------------------|---|
| 80               | True             | State the total number of inspections (including any follow-up site visits) that were carried out for activities that require a risk management plan under section 58 of the Clean Water Act in this reporting period. If no inspections were conducted in the previous calendar year, please explain. |              |                  |   |    |                  |   |
|                  |                  | <table><tr><th>Current Year</th><th>Cumulative Count</th></tr><tr><td>2</td><td>11</td></tr><tr><td>Provincial Total</td><td>2</td></tr></table>   | Current Year | Cumulative Count | 2 | 11 | Provincial Total | 2 |
| Current Year     | Cumulative Count |  |              |                  |   |    |                  |   |
| 2                | 11               |  |              |                  |   |    |                  |   |
| Provincial Total | 2                |  |              |                  |   |    |                  |   |
| Comment:         |                  |  |              |                  |   |    |                  |   |

| Report Id        | Completed        | Question   |              |                  |   |   |                  |   |
|------------------|------------------|--|--------------|------------------|---|---|------------------|---|
| 81               | True             | Among the inspections conducted for section 58, how many were in contravention with section 58 of the Clean Water Act in this reporting period (i.e., person engaging in a drinking water threat activity without a risk management plan as required by the source protection plan)? |              |                  |   |   |                  |   |
|                  |                  | <table><tr><th>Current Year</th><th>Cumulative Count</th></tr><tr><td>0</td><td>1</td></tr><tr><td>Provincial Total</td><td>0</td></tr></table>  | Current Year | Cumulative Count | 0 | 1 | Provincial Total | 0 |
| Current Year     | Cumulative Count |  |              |                  |   |   |                  |   |
| 0                | 1                |  |              |                  |   |   |                  |   |
| Provincial Total | 0                |  |              |                  |   |   |                  |   |
| Comment:         |                  |  |              |                  |   |   |                  |   |



# Source Water Protection Annual Report

## 2024 - Supplemental Form

### SPR - Niagara Peninsula

| Report Id        | Completed        | Question   |              |                  |   |   |
|------------------|------------------|--|--------------|------------------|---|---|
| 82               | True             | Among the inspections for section 58, how many were in non-compliance with the specific contents of the risk management plan in this reporting period? (NOTE: Please only include those inspections that showed non-compliance with measures/conditions to manage the actual threat activity.) |              |                  |   |   |
|                  |                  | <table><thead><tr><th>Current Year</th><th>Cumulative Count</th></tr></thead><tbody><tr><td>0</td><td>0</td></tr></tbody></table>  | Current Year | Cumulative Count | 0 | 0 |
| Current Year     | Cumulative Count |  |              |                  |   |   |
| 0                | 0                |  |              |                  |   |   |
| Provincial Total |                  | 0  |              |                  |   |   |
| Comment:         |                  |  |              |                  |   |   |

| Report Id        | Completed        | Question  |              |                  |   |   |
|------------------|------------------|---|--------------|------------------|---|---|
| 83               | True             | State the total number of notices issued where there were cases of contraventions and/or non-compliance found with section 57 in this reporting period. |              |                  |   |   |
|                  |                  | <table><thead><tr><th>Current Year</th><th>Cumulative Count</th></tr></thead><tbody><tr><td>0</td><td>0</td></tr></tbody></table>                       | Current Year | Cumulative Count | 0 | 0 |
| Current Year     | Cumulative Count |   |              |                  |   |   |
| 0                | 0                |   |              |                  |   |   |
| Provincial Total |                  | 0   |              |                  |   |   |
| Comment:         |                  |   |              |                  |   |   |

| Report Id        | Completed        | Question  |              |                  |   |   |
|------------------|------------------|---|--------------|------------------|---|---|
| 84               | True             | State the total number of notices issued where there were cases of contraventions and/or non-compliance found with section 58 in this reporting period. |              |                  |   |   |
|                  |                  | <table><thead><tr><th>Current Year</th><th>Cumulative Count</th></tr></thead><tbody><tr><td>0</td><td>0</td></tr></tbody></table>                       | Current Year | Cumulative Count | 0 | 0 |
| Current Year     | Cumulative Count |   |              |                  |   |   |
| 0                | 0                |   |              |                  |   |   |
| Provincial Total |                  | 0   |              |                  |   |   |
| Comment:         |                  |   |              |                  |   |   |



# Source Water Protection Annual Report

## 2024 - Supplemental Form

### SPR - Niagara Peninsula

| Report Id        | Completed        | Question  |              |                  |   |   |                  |   |
|------------------|------------------|---|--------------|------------------|---|---|------------------|---|
| 85               | True             | State the total number of orders issued for contraventions and/or non-compliance found with section 57 in this reporting period.                |              |                  |   |   |                  |   |
|                  |                  | <table><tr><th>Current Year</th><th>Cumulative Count</th></tr><tr><td>0</td><td>0</td></tr><tr><td>Provincial Total</td><td>0</td></tr></table> | Current Year | Cumulative Count | 0 | 0 | Provincial Total | 0 |
| Current Year     | Cumulative Count |   |              |                  |   |   |                  |   |
| 0                | 0                |   |              |                  |   |   |                  |   |
| Provincial Total | 0                |   |              |                  |   |   |                  |   |
| Comment:         |                  |   |              |                  |   |   |                  |   |

| Report Id        | Completed        | Question  |              |                  |   |   |                  |   |
|------------------|------------------|---|--------------|------------------|---|---|------------------|---|
| 86               | True             | State the total number of orders issued for contraventions and/or non-compliance found with section 58 in this reporting period.                |              |                  |   |   |                  |   |
|                  |                  | <table><tr><th>Current Year</th><th>Cumulative Count</th></tr><tr><td>0</td><td>1</td></tr><tr><td>Provincial Total</td><td>1</td></tr></table> | Current Year | Cumulative Count | 0 | 1 | Provincial Total | 1 |
| Current Year     | Cumulative Count |   |              |                  |   |   |                  |   |
| 0                | 1                |   |              |                  |   |   |                  |   |
| Provincial Total | 1                |   |              |                  |   |   |                  |   |
| Comment:         |                  |   |              |                  |   |   |                  |   |



# Source Water Protection Annual Report

## 2024 - Supplemental Form

### SPR - Niagara Peninsula

| Report Id | Completed | Question |
|-----------|-----------|----------|
|-----------|-----------|----------|

|     |      |  |
|-----|------|--|
| 220 | True | List the municipality(ies) (including upper-, lower-, and single-tier) within the source protection region/area that are required to complete Official Plan and Zoning exercises to conform to the latest source protection plan, and indicate the status of those exercises for each applicable municipality. "Latest source protection plan" means the first approved plan or any subsequent approved plan update. *NOTE: Applies to every municipality affected by land use planning or Part IV type policies. Where the official plan and/or zoning by-law status for any particular municipality needs to be changed/updated, then please do so by deleting the entry for that particular municipality by clicking on the red "-" (minus) sign and then re-select the municipality name from the drop down list of municipalities followed by selecting the updated status of the conformity exercise for the official plan and zoning by-law from the drop down list for that particular municipality. After doing so, please be sure to add the municipality as your response by clicking on the green plus sign. |
|-----|------|--|

| Municipality                      | Official Plan | Zoning By Law  |
|-----------------------------------|---------------|----------------|
| City of Niagara Falls             | Completed     | Completed      |
| City of Port Colborne             | Completed     | Completed      |
| City of Thorold                   | Completed     | Completed      |
| Niagara, Regional Municipality of | Completed     | Not Applicable |

Comment:

| Report Id | Completed | Question |
|-----------|-----------|----------|
|-----------|-----------|----------|

|     |      |   |
|-----|------|---|
| 240 | True | State the number of source water protection signs installed on provincial highways in the source protection region/area in this reporting period. |
|-----|------|---|

| Current Year | Cumulative Count |
|--------------|------------------|
|--------------|------------------|

|   |   |
|---|---|
| 0 | 4 |
|---|---|

|                  |   |   |
|------------------|---|---|
| Provincial Total | 0 | 4 |
|------------------|---|---|

Comment:



# Source Water Protection Annual Report

## 2024 - Supplemental Form

### SPR - Niagara Peninsula

| Report Id        | Completed        | Question  |              |                  |   |    |
|------------------|------------------|---|--------------|------------------|---|----|
| 241              | True             | State the number of source water protection signs installed on municipal roads in the source protection region/area in this reporting period. |              |                  |   |    |
|                  |                  | <table><tr><th>Current Year</th><th>Cumulative Count</th></tr><tr><td>0</td><td>19</td></tr></table>  | Current Year | Cumulative Count | 0 | 19 |
| Current Year     | Cumulative Count |   |              |                  |   |    |
| 0                | 19               |   |              |                  |   |    |
| Provincial Total |                  | 019   |              |                  |   |    |
| Comment:         |                  |   |              |                  |   |    |

| Report Id        | Completed        | Question  |              |                  |   |   |
|------------------|------------------|---|--------------|------------------|---|---|
| 242              | True             | State the number of source water protection signs installed at other locations (if applicable) in the source protection region/area in this reporting period. |              |                  |   |   |
|                  |                  | <table><tr><th>Current Year</th><th>Cumulative Count</th></tr><tr><td>0</td><td>0</td></tr></table>   | Current Year | Cumulative Count | 0 | 0 |
| Current Year     | Cumulative Count |   |              |                  |   |   |
| 0                | 0                |   |              |                  |   |   |
| Provincial Total |                  | 00  |              |                  |   |   |
| Comment:         |                  |   |              |                  |   |   |

| Report Id           | Completed | Question  | Category                  |
|---------------------|-----------|---|---------------------------|
| 260                 | True      | Current total overall number of on-site sewage systems that are assessed as significant drinking water threat activities and that are required to be inspected every five years in accordance with the Ontario Building Code. | Sewage System Inspections |
| <b>Answer:</b>      |           | 0   |                           |
| <b>Comment:</b> N/A |           |   |                           |





# Source Water Protection Annual Report

## 2024 - Supplemental Form

### SPR - Niagara Peninsula

| Report Id | Completed | Question   | Category                  |
|-----------|-----------|--|---------------------------|
| 261       | True      | Of those requiring inspections, how many inspections of on-site sewage systems were due to be carried out in this reporting period? If not applicable or no inspections of on-site sewage systems were due to be carried out in this reporting period because they were already inspected earlier within the inspection cycle or will be inspected in a future year within the cycle, then please enter "0" and state either explanation in the comment field. | Sewage System Inspections |
| Answer:   |           | 0  |                           |

Comment: N/A

| Report Id        | Completed        | Question   |              |                  |   |   |   |   |
|------------------|------------------|--|--------------|------------------|---|---|---|---|
| 262              | True             | How many on-site sewage system inspections were completed in this reporting period?  |              |                  |   |   |   |   |
|                  |                  | <table><tr><th>Current Year</th><th>Cumulative Count</th></tr><tr><td>0</td><td>0</td></tr><tr><td>0</td><td>0</td></tr></table> | Current Year | Cumulative Count | 0 | 0 | 0 | 0 |
| Current Year     | Cumulative Count |  |              |                  |   |   |   |   |
| 0                | 0                |  |              |                  |   |   |   |   |
| 0                | 0                |  |              |                  |   |   |   |   |
| Provincial Total |                  |  |              |                  |   |   |   |   |
| Comment:         |                  | N/A  |              |                  |   |   |   |   |

| Report Id        | Completed        | Question   |              |                  |   |   |   |   |
|------------------|------------------|--|--------------|------------------|---|---|---|---|
| 263              | True             | How many of the inspected on-site sewage systems required minor maintenance work in this reporting period?                       |              |                  |   |   |   |   |
|                  |                  | <table><tr><th>Current Year</th><th>Cumulative Count</th></tr><tr><td>0</td><td>0</td></tr><tr><td>0</td><td>0</td></tr></table> | Current Year | Cumulative Count | 0 | 0 | 0 | 0 |
| Current Year     | Cumulative Count |  |              |                  |   |   |   |   |
| 0                | 0                |  |              |                  |   |   |   |   |
| 0                | 0                |  |              |                  |   |   |   |   |
| Provincial Total |                  |  |              |                  |   |   |   |   |
| Comment:         |                  | N/A  |              |                  |   |   |   |   |



# Source Water Protection Annual Report

## 2024 - Supplemental Form

### SPR - Niagara Peninsula

| Report Id        | Completed | Question  |              |                  |
|------------------|-----------|---|--------------|------------------|
| 264              | True      | How many of the inspected on-site sewage systems required major maintenance work (e.g., tank replacement, etc.) in this reporting period? |              |                  |
|                  |           |   | Current Year | Cumulative Count |
|                  |           |   | 0            | 0                |
| Provincial Total |           |   | 0            | 0                |
| Comment: N/A     |           |   |              |                  |

| Report Id | Completed | Question   | Category                  |
|-----------|-----------|--|---------------------------|
| 265       | True      | How many of the inspected on-site sewage systems required no maintenance work? | Sewage System Inspections |
| Answer:   |           | 0  |                           |
| Comment:  |           | N/A  |                           |



# Source Water Protection Annual Report

## 2024 - Supplemental Form

### SPR - Niagara Peninsula

| Report Id  | Completed | Question  |
|--|-----------|---|
| 266  | True      | For those on-site sewage systems that were not inspected in this reporting period but should have been inspected, and are now out of compliance, please indicate why they were not all inspected from among the reasons below.<br>[Note: For municipalities that have not yet initiated the mandatory on-site sewage system inspection program, please see the next reportable to provide your response if this is the case]. |
| Response   |           | Answer  |
| landowner refused entry, compliance order being sought                           |           | No  |
| inspections delayed/postponed due to COVID-19 restrictions                       |           | No  |
| vulnerable area changed and on-site sewage system(s) no longer a threat activity |           | No  |
| other. Please specify in the comment box below.                                  |           | No  |
| <b>Comment:</b> N/A  |           |   |



# Source Water Protection Annual Report

## 2024 - Supplemental Form

### SPR - Niagara Peninsula

Report Id Completed Question

270 True Complete the information below regarding environmental monitoring of drinking water issues identified in accordance with the Technical Rules within your source protection region/area. Begin by selecting the drinking water system, the specific well or intake, the drinking water issue, the delineation status, and the observation of the concentration. [OPTIONAL]: In the comments field, describe any actions or behavioural changes that might be contributing to reported changes in the concentration of the issue or parameter. Where the drinking water issue, well or intake, delineation status, or observation of any previously listed drinking water system needs to be changed/updated, then please do so by deleting the entry for that particular drinking water system by clicking on the red minus sign on the right side of the entry and then re-select the drinking water system from the dropdown list of drinking water systems followed by selecting the associated well or intake, the drinking water issue, its delineation status, and the observation from the dropdown list for that particular drinking water system. After doing so, please be sure to add the drinking water system as your response by clicking on the green plus sign on the right side of the entry. If this reportable is not applicable to your source protection region/area, please indicate as such by choosing "No system with issues," "Not Known/Available," "No issue," "Not applicable," and "No observation," respectively, under the drop down menu options under each of the categories of this reportable. Do not leave blank.

| DWIS Number | DWIS Name                   | Issue          | ICA Delinated       | Observation          |
|-------------|-----------------------------|----------------|---------------------|----------------------|
|             | -- No system with issues -- | -- No Issue -- | --Not Applicable -- | -- No Observation -- |

Comment: N/A

Report Id Completed Question

280 True How many notices about transport pathways (meaning a condition of land resulting from human activity (e.g., pits and quarries, improperly abandoned wells, geothermal system, etc.) that increases the vulnerability of a raw water supply of a drinking water system) did the source protection authority receive from municipalities in this reporting period (as per O. Reg. 287/07, ss. 27(3))?

|  | Current Year | Cumulative Count |
|--|--------------|------------------|
|--|--------------|------------------|

|  |   |   |
|--|---|---|
|  | 0 | 0 |
|--|---|---|

|                  |   |   |
|------------------|---|---|
| Provincial Total | 0 | 0 |
|------------------|---|---|

Comment: Transport Pathways cannot increase the vulnerability score of Intake Protection Zones. However, through implementation of screening layers, municipalities are aware to notify the Source Protection Authority for developments within IPZs that may increase the size of the vulnerable area. To date, none to our knowledge have required modification of the existing vulnerable area delineations.



# Source Water Protection Annual Report

## 2024 - Supplemental Form

### SPR - Niagara Peninsula

| Report Id   | Completed | Question   |               |
|---|-----------|--|---------------|
| 281   | True      | Where transport pathway notices were received, indicate the action(s) taken by the source protection region/area in response to receiving these notices: |               |
| <b>Response</b>   |           |  | <b>Answer</b> |
| Provided information to municipalities about changes in vulnerability   |           |  | No            |
| Provided notice to Source Protection Committee for information  |           |  | No            |
| Situation continues to be monitored   |           |  | No            |
| <b>Comment:</b> Again, transport pathways cannot increase vulnerability of Intake Protection Zones. The SPA continues to receive notifications regarding potential boundary alterations due to IPZ transport pathways, to date none have required action. |           |  |               |



# Source Water Protection Annual Report

## 2024 - Supplemental Form

### SPR - Niagara Peninsula

| Report Id   | Completed | Question   |
|---|-----------|--|
| 300   | True      | [OPTIONAL]: If and where there are successful examples for each of the following initiatives in the source protection region/area (including from local municipalities, residents and businesses) that occurred in this reporting period that the authority wishes to highlight, then please indicate in the Comments field below. In your comments, please include details for each of the selected topics. Please limit the descriptions provided (e.g., one example for each topic or more could be included when the source protection authority feels they are exceptional/quite successful). |
| Response  |           | Answer   |
| Education and Outreach (in description include details, if available, on type and percentage of target population reached, outcome(s) achieved, etc.)   |           | Yes  |
| Incentives (in description include details, if available, on outcome(s) achieved, how widely available was the incentive, etc.)   |           | Yes  |
| Stewardship Programs  |           | No   |
| Best Management Practices   |           | No   |
| Pilot Programs  |           | No   |
| Research  |           | Yes  |
| Specify Action (e.g., road salt management, municipal by-laws, legislative or regulatory amendments, mapping, review of fuel codes, new airport facility design standards to manage runoff of chemicals from de-icing of aircraft, instrumentation, etc.) |           | No   |
| Climate Change (e.g., data collection)  |           | Yes  |
| Spill prevention/spill contingency/emergency response plan updates  |           | Yes  |
| Transport pathways  |           | Yes  |
| Water quantity  |           | No   |
| Great Lakes   |           | Yes  |
| Other policies (i.e., strategic action, etc.)   |           | No   |



# Source Water Protection Annual Report

## 2024 - Supplemental Form

### SPR - Niagara Peninsula

**Comment:** Several education and outreach initiatives continued throughout 2024 with the direct or indirect goal of source protection awareness.

The Children's Water Festival continues to be an excellent event where children can participate in water conservation and protection activities. The event was well received and well attended with the activities that deal with water protection being amongst the most popular (i.e., Yellow Fish Road).

Incentive programs at local municipalities and the conservation authority continued in 2024 (i.e., disconnecting storm drains from local sewers, and the groundwater well decommissioning program).

A partnership with western CAs is in the works for 2025 to help promote the Drinking Water Wise Webinar series.



# Source Water Protection Annual Report

## 2024 - Supplemental Form

### SPR - Niagara Peninsula

Report Id Completed Question

305 True

Complete the table below with the count data for each significant drinking water threat activity/local threat activity/condition being engaged in (i.e., enumerated as 'existing' significant threats) at the time of source protection plan approval or approval of amendments that include new / changing protection zones. Please use the best available information/desktop exercises, reports from Risk Management Officials, and other implementing bodies to provide the counts below. For convenience, the count data from the previous reporting year have been copied over, but please be sure to review, edit, and confirm the counts for accuracy in the table below. [CWA Section 46(1)(a)]

The running tally consists of the formula:  $A+B-C-D$  where:

A = Number of significant drinking water threats estimated when the source protection plan was first approved

B = Number of additional significant drinking water threats counted after the first source protection plan approval (not part of the original estimate)

C = Number of significant drinking water threats included in A that were determined through field verification to no longer exist because: (i) the threat was not actually engaged in at a particular location after all OR (ii) it was no longer engaged in (e.g., land may still have an agricultural operation but owner is no longer applying pesticides for their own reasons)

D = Number of significant drinking water threats addressed because a policy is implemented. (It is understood that multiple policies/policy tools may address a single threat on the landscape. If any one policy is implemented and directed at that single threat it is considered addressed.)

In the comments box below summarize any remaining significant threats needing to be addressed for each source protection authority and what actions will be taken to eliminate those threats. If all threats have been addressed for each source protection authority(ies) write "All known significant threats have been addressed" in the comments box. Note that this summary response will be posted under the objective summary section 2 of the report.

| ThreatId | Threat   | A | B | C | D |
|----------|--|---|---|---|---|
| 1        | The establishment, operation or maintenance of a waste disposal site within the meaning of Part V of the Environmental Protection Act. | 0 | 0 | 0 | 0 |
| 2        | The establishment, operation or maintenance of a system that collects, stores, transmits, treats or disposes of sewage.                | 0 | 0 | 0 | 0 |
| 3        | The application of agricultural source material to land.   | 8 | 0 | 3 | 5 |
| 4        | The storage of agricultural source material.   | 8 | 0 | 3 | 5 |





# Source Water Protection Annual Report

## 2024 - Supplemental Form

### SPR - Niagara Peninsula

|      |  |   |   |   |   |
|------|--|---|---|---|---|
| 5    | The management of agricultural source material.  | 0 | 0 | 0 | 0 |
| 6    | The application of non-agricultural source material to land.   | 0 | 1 | 1 | 0 |
| 7    | The handling and storage of non-agricultural source material.  | 0 | 0 | 0 | 0 |
| 8    | The application of commercial fertilizer to land.  | 0 | 0 | 0 | 0 |
| 9    | The handling and storage of commercial fertilizer.   | 0 | 0 | 0 | 0 |
| 10   | The application of pesticide to land.  | 0 | 0 | 0 | 0 |
| 11   | The handling and storage of pesticide.   | 0 | 0 | 0 | 0 |
| 12   | The application of road salt.  | 0 | 0 | 0 | 0 |
| 13   | The handling and storage of road salt.   | 0 | 0 | 0 | 0 |
| 14   | The storage of snow.   | 0 | 0 | 0 | 0 |
| 15   | The handling and storage of fuel.  | 0 | 0 | 0 | 0 |
| 16   | The handling and storage of a dense non-aqueous phase liquid.  | 0 | 0 | 0 | 0 |
| 17   | The handling and storage of an organic solvent.  | 0 | 0 | 0 | 0 |
| 18   | The management of runoff that contains chemicals used in the de-icing of aircraft.   | 0 | 0 | 0 | 0 |
| 19   | Water taking from an aquifer without returning the water to the same aquifer or surface water body                               | 0 | 0 | 0 | 0 |
| 20   | Reducing recharge of an aquifer  | 0 | 0 | 0 | 0 |
| 21   | The use of land as livestock grazing or pasturing land, an outdoor confinement area or a farm-animal yard. O. Reg. 385/08, s. 3. | 8 | 0 | 3 | 5 |
| 22   | The establishment and operation of a liquid hydrocarbon pipeline   | 0 | 0 | 0 | 0 |
| 1000 | Water conditioning salts from water softeners  | 0 | 0 | 0 | 0 |



# Source Water Protection Annual Report

## 2024 - Supplemental Form

### SPR - Niagara Peninsula

|      |   |         |     |   |    |    |
|------|---|---------|-----|---|----|----|
| 1001 | Transportation of specified substances along corridors                | 0       | 0   | 0 | 0  |    |
| 1002 | Spill of Tritium from Nuclear Generating Station                      | 0       | 0   | 0 | 0  |    |
| 1003 | Handling storage of fuel  | 36      | 0   | 0 | 36 |    |
| 1004 | Transportation, storage and handling of diesel/gasoline               | 36      | 0   | 0 | 36 |    |
| 1005 | Transportation of Agricultural and Non-Agricultural Source Materials  | 6       | 0   | 0 | 6  |    |
| 1006 | International Shipping Channel within IPZ2                            | 0       | 0   | 0 | 0  |    |
| 1007 | Transportation of hazardous substances along transportation corridors | 0       | 0   | 0 | 0  |    |
| 1008 | Transportation or Storage and Handling of Fuel in an Event Based Area | 0       | 0   | 0 | 0  |    |
| 1009 | Waterfowl   | 0       | 0   | 0 | 0  |    |
| 1010 | Local condition   | 0       | 0   | 0 | 0  |    |
| 93   | 93  | Totals: | 102 | 1 | 10 | 93 |

Comment:

MECP Calc (C+D)/(A+B): 100 %

| Report Id | Completed | Question   | Category                               |
|-----------|-----------|--|--|
| 310       | True      | Please provide comments below to explain the overall progress made in addressing existing significant threat activities and include the percentage of overall progress made within the comments provided. The percentage of overall progress made in addressing local threats and conditions that are taking place on the landscape is determined by taking the total number in column D (i.e., significant drinking water threat addressed because policy is implemented) from the table above (reportable 305) adding it to C (i.e., significant threats determined through field verification to no longer be threats) and dividing it by the number that is derived by adding the total numbers in columns A and B. In other words, overall progress made = (C+D)/(A + B). | Addressing existing enumerated threats |

Answer: P: Progressing Well/On Target 100%, All policies are implemented and all significant threats are addressed.

Comment:



# Source Water Protection Annual Report

## 2024 - Supplemental Form

### SPR - Niagara Peninsula

| Report Id | Completed | Question   | Category                           |
|-----------|-----------|--|------------------------------------|
| 320       | True      | If applicable, where the 2013/2017 technical rules were used for the assessment report update/amendment, provide a summary of steps taken to further assess or implement the plans of work described in technical rule 30.1: Water Budget Tier 3 not included in your original assessment report(s). | Assessment report information gaps |

Answer: N/A

Comment:

| Report Id | Completed | Question  | Category                           |
|-----------|-----------|---|------------------------------------|
| 321       | True      | If applicable, where the 2013/2017 technical rules were used for the assessment report update/amendment, provide a summary of steps taken to further assess or implement the plans of work described in technical rule 50.1: GUDI for WHPA-E or F not included in your original assessment report(s). | Assessment report information gaps |

Answer: N/A

Comment:

| Report Id | Completed | Question  | Category                           |
|-----------|-----------|---|------------------------------------|
| 322       | True      | If applicable, where the 2013/2017 technical rules were used for the assessment report update/amendment, provide a summary of steps taken to further assess or implement the plans of work described in technical rule 116: Issue Contributing Area not included in your original assessment report(s). | Assessment report information gaps |

Answer: N/A

Comment:



# Source Water Protection Annual Report

## 2024 - Supplemental Form

### SPR - Niagara Peninsula

| Report Id | Completed | Question  | Category                           |
|-----------|-----------|---|------------------------------------|
| 323       | True      | [OPTIONAL] If applicable where the 2021 technical rules were used for the assessment report update/amendment, provide a summary of steps taken to further assess or implement the plans of work described in technical rule 30.1: Water Budget Tier 3 not included in your original assessment report(s). | Assessment report information gaps |

Answer: N/A

Comment:

| Report Id | Completed | Question   | Category                           |
|-----------|-----------|--|------------------------------------|
| 324       | True      | [OPTIONAL] Where the 2021 technical rules were used for the assessment report update/amendment, provide a summary of steps taken to further assess or implement the plans of work described in technical rule 50.1: GUDI for WHPA-E or F not included in your original assessment report(s). | Assessment report information gaps |

Answer: N/A

Comment:

| Report Id | Completed | Question   | Category              |
|-----------|-----------|--|-----------------------|
| 330       | True      | Does the source protection authority have any other item(s) on which it wishes to report? If so, please explain. | Other reporting items |

Answer: N/A

Comment:



# Source Water Protection Annual Report

## 2024 - Supplemental Form

### SPR - Niagara Peninsula

| Report Id   | Completed | Question  |               |
|---|-----------|---|---------------|
| 350   | True      | In the opinion of the Source Protection Committee, to what extent have the objectives of the source protection plan been achieved in this reporting period? |               |
| <b>Response</b>   |           |   | <b>Answer</b> |
| Progressing Well - The majority of the policies from the approved original or an amended source protection plan have been implemented and/or are progressing well |           |   | Yes           |
| Satisfactory - Some of the policies from the approved original or an amended source protection plan have been implemented and/or are progressing well             |           |   | No            |
| Limited Progress made - A few of the policies from the approved original or an amended source protection plan have been implemented and/or are progressing well   |           |   | No            |
| <b>Comment:</b>   |           |   |               |



# Source Water Protection Annual Report

## 2024 - Supplemental Form

### SPR - Niagara Peninsula

| Report Id       | Completed | Question   | Category   |
|-----------------|-----------|--|--|
| 351             | True      | Please provide comments to explain how the Source Protection Committee arrived at its opinion. Include a summary of any discussions that might have been had amongst the Source Protection Committee members, especially where no consensus was reached. | Achievement of source protection plan objectives |
| <b>Answer:</b>  |           | The Source Protection Committee states that based on the information provided that all of the significant drinking water threats have been addressed and all of the policies are implemented.  |  |
| <b>Comment:</b> |           |  |  |

---

**REPORT TO:** Source Protection Authority

**SUBJECT:** Issuance of Notices to Niagara Region

**REPORT NO:** SPA-02-25

**DATE:** April 25, 2025

---

**Recommendation:**

**THAT** Report No. SPA-02-25: Issuance of Notices to Niagara Region be **RECEIVED**;

**AND THAT** the Source Protection Authority **DELEGATE** to the Director, Planning & Development the authority to issue Notices to Niagara Region for the purposes of Ontario Regulation 287/07.

**Purpose:**

To update the local business protocol for the Niagara Peninsula Source Protection Authority that satisfies the requirements of the *Clean Water Act* General Regulation (Ontario Regulation 287/07) in a manner that minimizes delays to Niagara Region water treatment plant projects.

**Background:**

As of July 1, 2018, a municipal drinking water system owner cannot apply for a drinking water works permit or a municipal drinking water licence without a Notice from the local Source Protection Authority and cannot supply treated water to the public until the Source Protection Plan is approved by the Ministry of the Environment, Conservation and Parks.

On September 19, 2018, the Source Protection Authority resolved to delegate the authority of issuing the required Notices under Ontario Regulation 287/07 to the Director of Watershed Management to assist with minimizing delays to Niagara Region water treatment plant projects.

The attached Source Protection Authority Report SPA-05-18 details the rationale for this delegation of authority. As the organizational structure at the Niagara Peninsula Conservation Authority has since changed, staff are recommending updating this process and delegating the authority to the Director, Planning & Development, to ensure that the Source Protection Authority is prepared to issue these Notices when required.

**Summary:**

Currently, all drinking water treatment plants within the Niagara Peninsula Source Protection Area are covered by the Approved Source Protection Plan. As Niagara Region progresses further on their drinking water treatment system upgrades, a time will come when the Source Protection Plan will need to be updated to reflect those changes.

In conclusion, staff are looking to update the delegated authority of issuing Notices to Niagara Region as required by Ontario Regulation 287/07 to the Director, Planning & Development to minimize delays to Niagara Region water treatment plant system upgrades.

**Related Reports and Appendices:**

Appendix 1: Source Protection Authority Report SPA-05-18

Appendix 2: Notice of Amendments to the Source Protection Plan (Template)

**Prepared by:**

*Original Signed by:*

---

Thomas Proks, P.Geo.  
Source Water Protection & Hydrogeology  
Specialist

**Reviewed by:**

*Original Signed by:*

---

David Deluce, MCIP, RPP  
Director, Planning & Development

**Submitted by:**

*Original Signed by:*

---

Leilani Lee-Yates, BES, MSPL.RPD, MCIP, RPP  
CAO/Secretary-Treasurer



**Report To:** Source Protection Authority (SPA) Board of Directors

**Subject:** Issuance of Notices to Niagara Region

**Report No:** SPA 05-18

**Date:** September 19, 2018

---

**RECOMMENDATION:**

1. That the Source Protection Authority **DELEGATE** to the Director of Watershed Management the authority to issue Notices to Niagara Region for the purposes of O.Reg.287/07.

**PURPOSE:**

To establish a local business protocol for the Niagara Peninsula Source Protection Authority that satisfies the requirements of the Clean Water Act General Regulation (O.Reg.287/07) in a manner that minimizes delays to Niagara Region water treatment plant projects.

**BACKGROUND:**

Effective July 1, 2018, a municipal water system owner cannot:

- a) apply for a drinking water works permit or licence without a Notice from the local Source Protection Authority (SPA) under subsection 48(1.1) of O.Reg.287/07, or
- b) supply treated water to the public until the updated source protection plan (SPP) is approved by the Ministry of the Environmental, Conservation and Parks (MECP).

With the regulatory changes, the onus is on municipal residential drinking water system owners to ensure that source protection technical work for new and altered systems is completed.

Another process change is that the SPA must provide:

- a) a Notice to the system owner that includes a statement that the SPA is satisfied that the technical work has been completed (example Notice template – Appendix 1); and
- b) identify the anticipated or completed amendments to the Source Protection Plan (SPP).

The MECP has advised that the Notice to be provided by SPAs to system owners is administrative in nature and places no approval authority or obligations on SPAs. The general process from a SPA view is shown on Figure 1.

**DISCUSSION:**

We are currently between Stages 1 (Early Planning) and 2 (Notice from Owner) (Figure 1). Early Planning was completed as part of preparing the Source Protection Plan Update Workplan submitted to the Minister of the MECP (SPA Report 08-17). Staff have been assisting Niagara Region with the preparing of technical work proceeding Stage 2.

It is recommended delegation of the authority to issue these Notices (Stage 3) to Niagara Region be delegated to the Director of Watershed Management (Director) on behalf of the Niagara Peninsula Source Protection Authority. This should assist in minimizing delays to Niagara Region water treatment plant projects (e.g. months without board meetings). The SPA board would be notified of any notices issued by the Director. Please note, the City of Hamilton and Haldimand County are not mentioned for these Notices as they have no municipal water treatment plants within the Niagara Peninsula Source Protection Area.

In the event of a disagreement between the Director and Niagara Region on the suitability of the technical work to the requirements of the source protection technical rules, an external peer review will be completed, paid by Niagara Region. If the peer review is inconclusive the MECP will be engaged to review technical rule compliance.



**Figure 1: Early Incorporation of Source Protection Planning**

## **APPENDICES:**

Template – Notice of Amendments to the Source Protection Plan

**Prepared by:**

**Submitted by:**

---

**Tareq Al-Zabet**  
**Director, Watershed Management**

---

**Mark Brickell**  
**CAO/Secretary Treasurer**

*This report was prepared with the consultative input from Jayme Campbell, P.Eng., Supervisor, Special Projects.*



**NOTICE OF AMENDMENTS TO THE SOURCE PROTECTION PLAN**  
**(pursuant to section 48(1.1)(b) of Ontario Regulation 287/07)**

**Existing or Planned Municipal Drinking Water System (System):**

---

**Name of Owner of Existing or Planned Municipal Drinking Water System (Owner):**

The Regional Municipality of Niagara

---

**Applicable Source Protection Area (Source Protection Area):**

Niagara Peninsula Source Protection Area

---

The Niagara Peninsula Source Protection Authority is the Source Protection Authority for the Source Protection Area under the *Clean Water Act, 2006*.

The Niagara Peninsula Source Protection Authority has received written notice from the Owner about an intended application under the *Safe Drinking Water Act, 2002* for an existing or planned System that is located within the Source Protection Area.

The Niagara Peninsula Source Protection Authority is satisfied that the technical work required pursuant to subsection 48(1.1) of Ontario Regulation 287/07 under the *Clean Water Act, 2006* is completed for the purposes of identifying anticipated amendments to the source protection plan for the Source Protection Area.

The Niagara Peninsula Source Protection Authority anticipates the amendments set out in Schedule A of this notice will be required as a result of the intended application. The list of anticipated amendments in Schedule A is provisional and will undergo consultations with stakeholders and the source protection committee. All amendments must be approved by the Ministry of the Environment, Conservation and Parks and are subject to change after this notice is issued. The timing for approval of the amendments by the Ministry of Environment, Conservation and Parks is not within the control of the Source Protection Authority. The Schedule A also indicates amendments that have been completed.

All actions by Niagara Peninsula Source Protection Authority for the purposes of this notice are undertaken as the Source Protection Authority for the above noted Source Protection Area and are subject to the *Clean Water Act, 2006*. This notice does not exempt the Owner from obtaining the required license or permit to operate the System under the *Safe Drinking Water Act, 2002*.

**Issued by:** \_\_\_\_\_

**Date:** \_\_\_\_\_

Schedule A – List of Anticipated and Completed Amendments to Source Protection Plan

| No. | Section of<br>Source Protection Plan /<br>Assessment Report | Brief Description of Potential and<br>Completed Amendment | Estimated Timing to<br>Submit Proposed<br>Amendment to Ministry<br>of the Environment,<br>Conservation and Parks |
|-----|---|---|--|
|     |   |   |  |
|     |   |   |  |
|     |   |   |  |
|     |   |   |  |
|     |   |   |  |
|     |   |   |  |
|     |   |   |  |
|     |   |   |  |
|     |   |   |  |