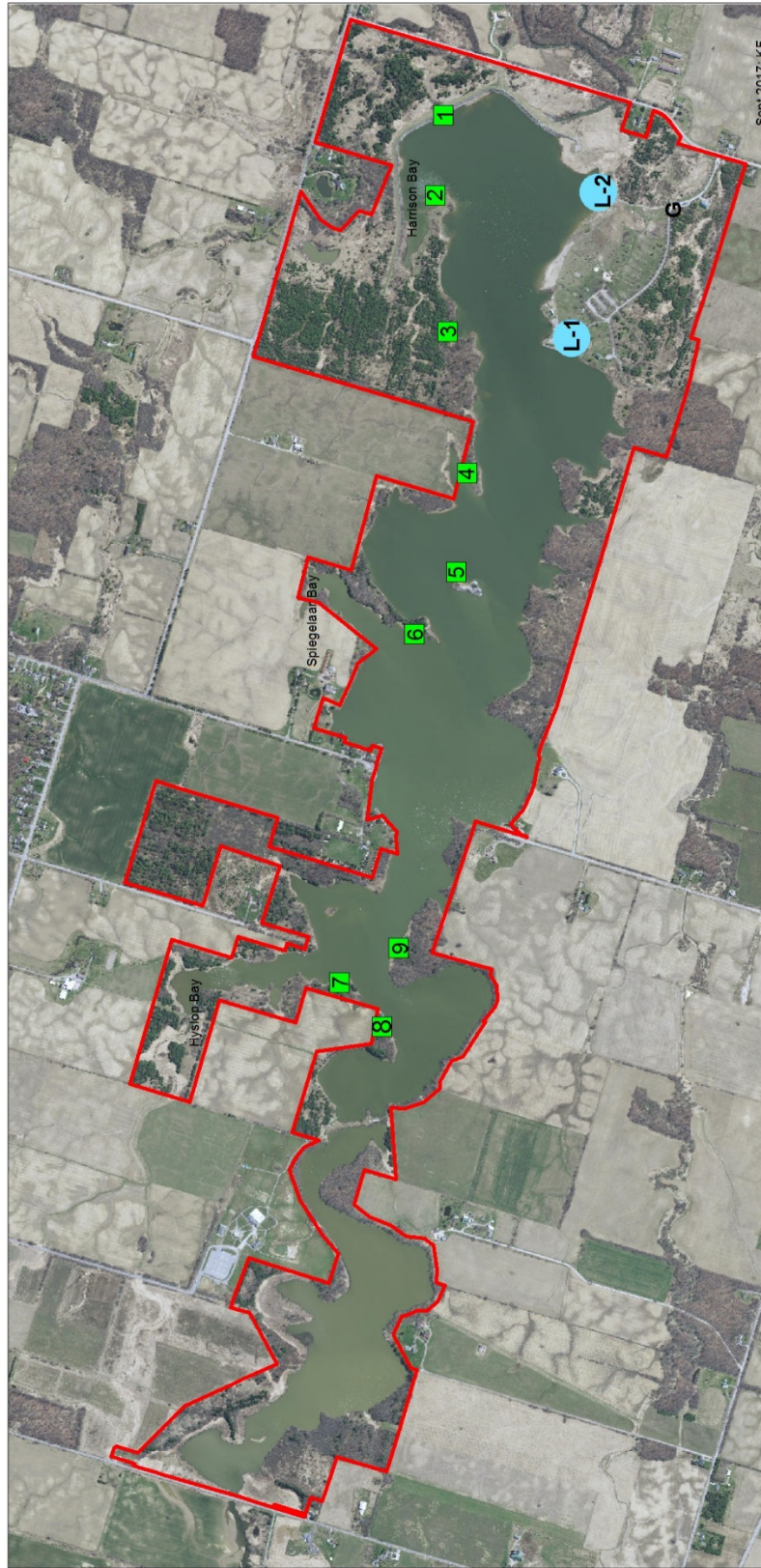


Binbrook Conservation Area Hunting Policies – 2020 Season

1. No person shall hunt migratory birds except during the prescribed open season and times.
2. **Days:** Binbrook Conservation Area is open for **waterfowl hunting Saturdays only** from September 26, 2020 through December 12, 2020 in unfrozen lake conditions.
3. **Time:** Hunting is permitted 1/2 hour before sunrise to 12 noon.
4. **Hunting Blind Registration and Access** from 5 a.m. to 6 a.m. Hunting closes at 12 noon. **Park Gate** closes sharply at 1 p.m. All vehicles must exit park prior to gate closure.
5. A **lottery draw** will be held to reserve the use of blinds for the **first two weeks (2 days) of the waterfowl season**. Credit card for prepayment (non-refundable) is required to confirm blind reservation. Applications available at www.npca.ca, and due August 31. Lottery draw is the following business day.
6. A **lottery draw** will also be held to **reserve the use of Blind # 5** for the hunting season October 10 through December 12, 2020. Credit card prepayment (non-refundable) is required to confirm blind reservation when drawn. Applications available at www.npca.ca, and due August 31. Draw is the following business day.
7. **Hunting Blinds (#1-4 and 6-9) for October 10 through December 12, 2020** are available upon reservation. Reservations start Sept. 8, 2020 (post Labour Day), on a first come-first served basis. Payment by credit card (non-refundable) required.
8. **Hunting Blind Reservations:** Reservations are required by 4 p.m. Friday, prior to each Saturday hunting date. Hunting blind requests can be made by: calling the park at (905) 692-3228 anytime, or in person during park hours of 8 a.m.- 4 p.m. Note: a hunting blind **request** becomes a **reservation when:**
 - a) Verbal or written confirmation is received from NPCA staff, and
 - b) Advance payment has been received by the NPCA in full

A minimum of one (1) hunting blind must be reserved for each scheduled hunt date. In the event there are no reservations by Friday 4 p.m., the following hunting date will be cancelled and noted on the Binbrook website and park phone message. "Walk-Ins" continue to be accepted for hunting blinds when the park is open. In such cases, we encourage hunters to call before coming or check the website for possible cancellation at <http://www.npca.ca/conservation-areas/binbrook>.
9. Hunting is permitted within the staked area/blind only. Maximum of 2 (two) hunters per blind.
10. Maximum of 9 hunting blinds are available for hunting. Hunters must park at the boat launch ramp.
11. A hunting fee of \$40 per hunting blind/day (plus HST) is applicable upon entry into the Conservation Area.
12. Every individual must wear a Department of Transport approved life-jacket or personal flotation device (PFD) while on board any boat in Binbrook Conservation Area.
13. There is to be no destruction of Conservation Authority property (i.e. no cutting trees, shrubs, branches) for duck blind camouflage or otherwise.
14. **Boats are required and mandatory** for hunting blind access. Rowboats and canoe rentals are available on-site for \$20.00 per day respectively.
15. **Electric motors only where necessary.** No gas motors are permitted.
16. A resident or non-resident Ontario Small Game Licence, Federal Migratory Game Birds Hunting Permit, and Wildlife Habitat Conservation Stamp are required to hunt at Binbrook Conservation Area.

17. All hunters must obey the Migratory Birds Conservation Act, the Game and Fish Act and their regulations.
18. Only non-toxic shot is permitted.
19. All empty shell casings must be deposited in the blue recycling box at the gatehouse.
20. No person shall kill, cripple or wound a migratory bird without making all reasonable efforts to retrieve the bird and include it in their daily bag limit. No person shall waste or wantonly dispose of a migratory game bird killed or retrieved and in his/her possession.
21. Hunting harvest reports must be completed and left at the gatehouse at the end of each hunting day. Failure to complete a report will result in elimination from opportunity for the hunting lottery/draw the following year.
22. Consumption of alcohol or other substances which can impair the safe use of firearms is explicitly prohibited. Any person found in contravention will be refused entrance to the Conservation Area.
23. All site users must comply with all park rules and regulations. Failure to comply with these and other park rules and regulations may result in eviction from the park.
24. These rules are intended to ensure the safety and well being of all site visitors.
25. Site program (i.e. dates, times, amounts, fees, number of hunting blinds etc.) are subject to change.
26. Please note other activities are occurring at the site during hunting hours.



Binbrook Conservation Area - Waterfowl Hunting Blind Locations

Legend

Conservation Area Boundary

7 Waterfowl Hunting Blind and Number

G Gate House

L-1 Boat Launch



Notice for Hunting

Practices for Reducing the Spread of COVID-19

In response to the impacts of the COVID-19 pandemic, and to limit the spread of illness, **the following protocols will be upheld through the 2020 Waterfowl Hunting Season**. Please note that this list is not exhaustive, and additional measures may be required for the fall season. Updates will be provided in advance of the season.

- Hunters are not permitted to enter the Conservation Area if they have come into a known or probable case of COVID-19, have travelled outside of Canada in the last 14 days, or if they are experiencing any of the following symptoms:
 - fever (feeling hot to the touch, a temperature of 37.8 degrees Celsius or higher)
 - chills
 - cough that's new or worsening (continuous, more than usual)
 - barking cough, making a whistling noise when breathing (croup)
 - shortness of breath (out of breath, unable to breathe deeply)
 - sore throat
 - difficulty swallowing
 - runny, stuffy or congested nose (not related to seasonal allergies or other known causes or conditions)
 - lost sense of taste or smell
 - pink eye (conjunctivitis)
 - headache that's unusual or long lasting
 - digestive issues (nausea/vomiting, diarrhea, stomach pain)
 - muscle aches
 - extreme tiredness that is unusual (fatigue, lack of energy)
 - falling down often
- **Hunters are reminded to practice appropriate hand hygiene and to bring their own hand sanitizer** (handwashing stations and sanitizer will not be provided)
- **Maintain physical distancing where possible and follow provincial guidelines regarding times when distancing cannot be maintained (i.e. people are advised to wear a mask)**
- Practice cough and sneeze etiquette by covering your cough or sneeze with a tissue or your sleeve
- All litter and waste must be removed from hunting blinds after use, please dispose of litter appropriately in marked receptacles in the conservation area, or take it home to dispose
- Post NPCA Waterfowl Hunting Lottery: Contactless payment and booking will be available by contacting Binbrook Conservation Area directly by phone