

W H O

A M

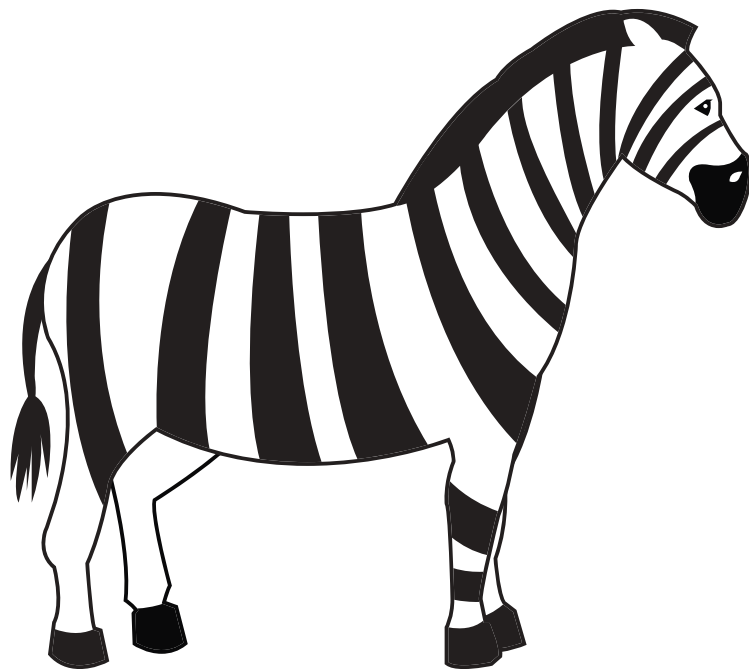
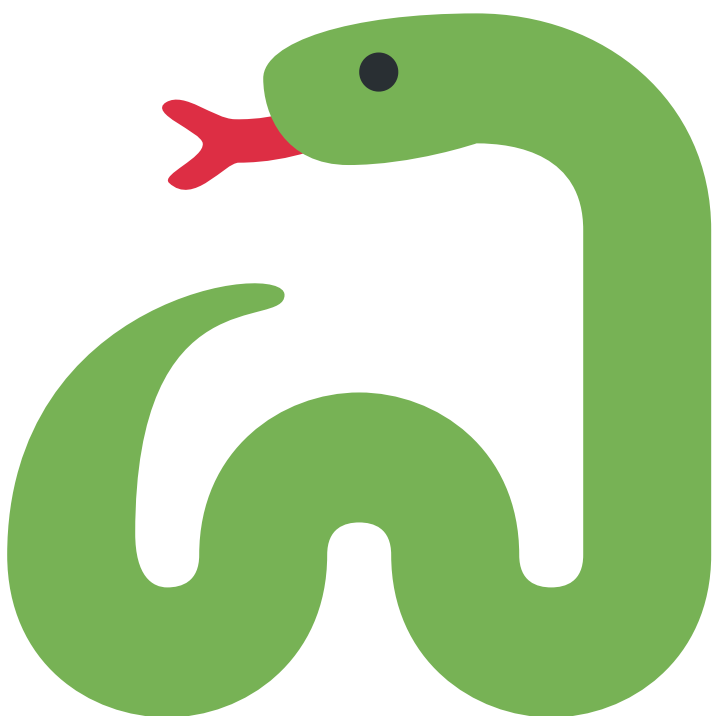
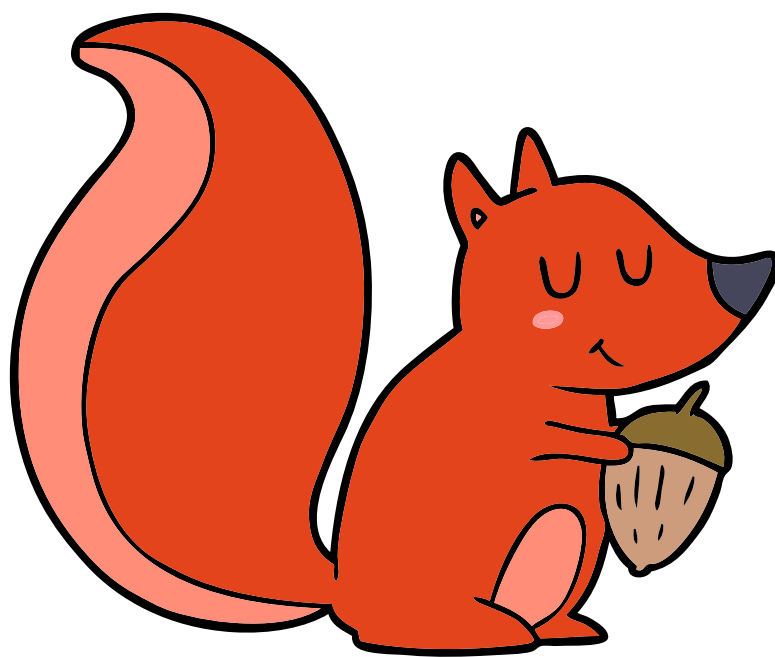
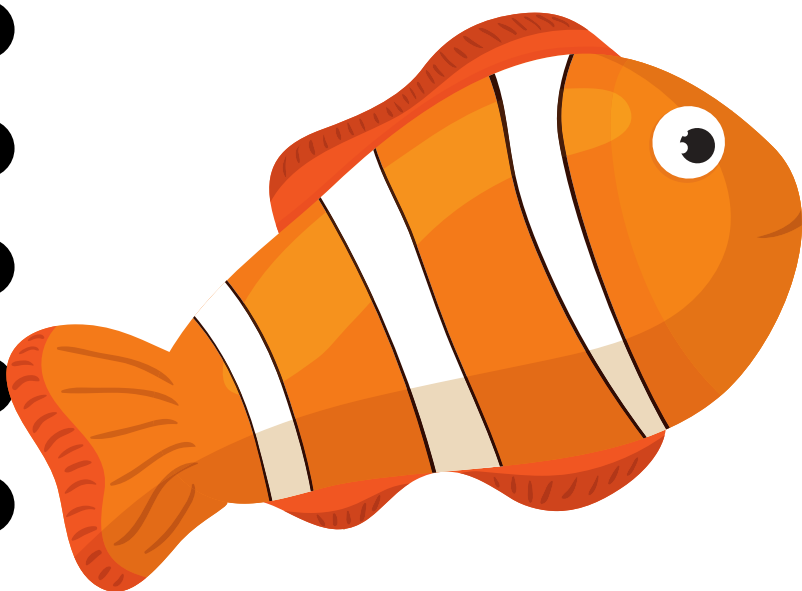
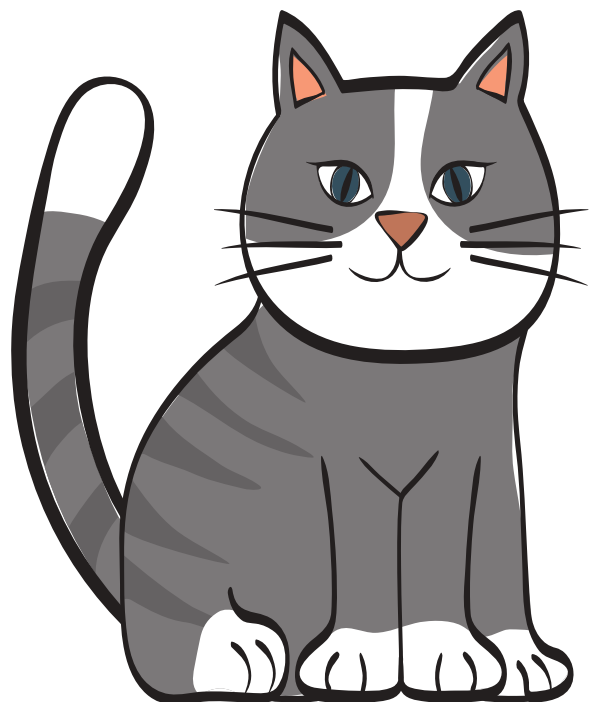
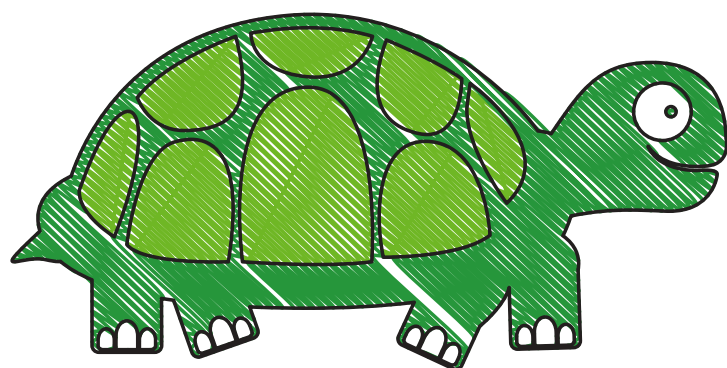
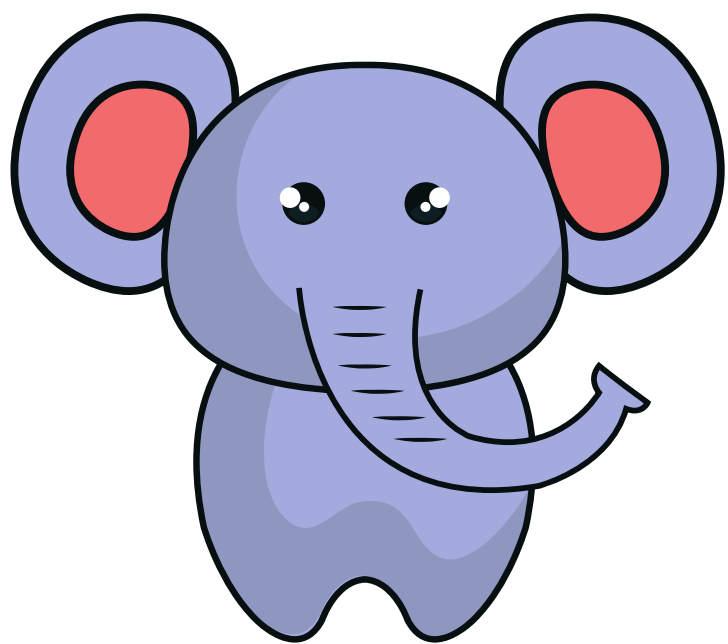
I

?

A N I M A L S



NIAGARA PENINSULA
CONSERVATION
AUTHORITY



R U L E S

1. Cut out the squares. Each person picks a square and someone tapes it to their back. Make sure they don't see it!
2. Ask someone in your family a question in the form of "Am I...?". Follow the instructions for each round:

ROUND 1

Colours

In this round you may only ask what colour your animal is.

Ex. Am I red?

Round 2

Size

In this round you may only ask what size your animal is.

Ex. Am I small like a mouse?

ROUND 3

Where you live and what you do

In this round you may only ask what habitat your animal lives in and how it moves

Ex. Am I an animal who lives in a nest? Am I an animal who can swim?

ROUND 4

Type of Animal

In this round you may now ask what type of animal you are based on the information you have received from the other rounds.

Ex. Am I a cat?

