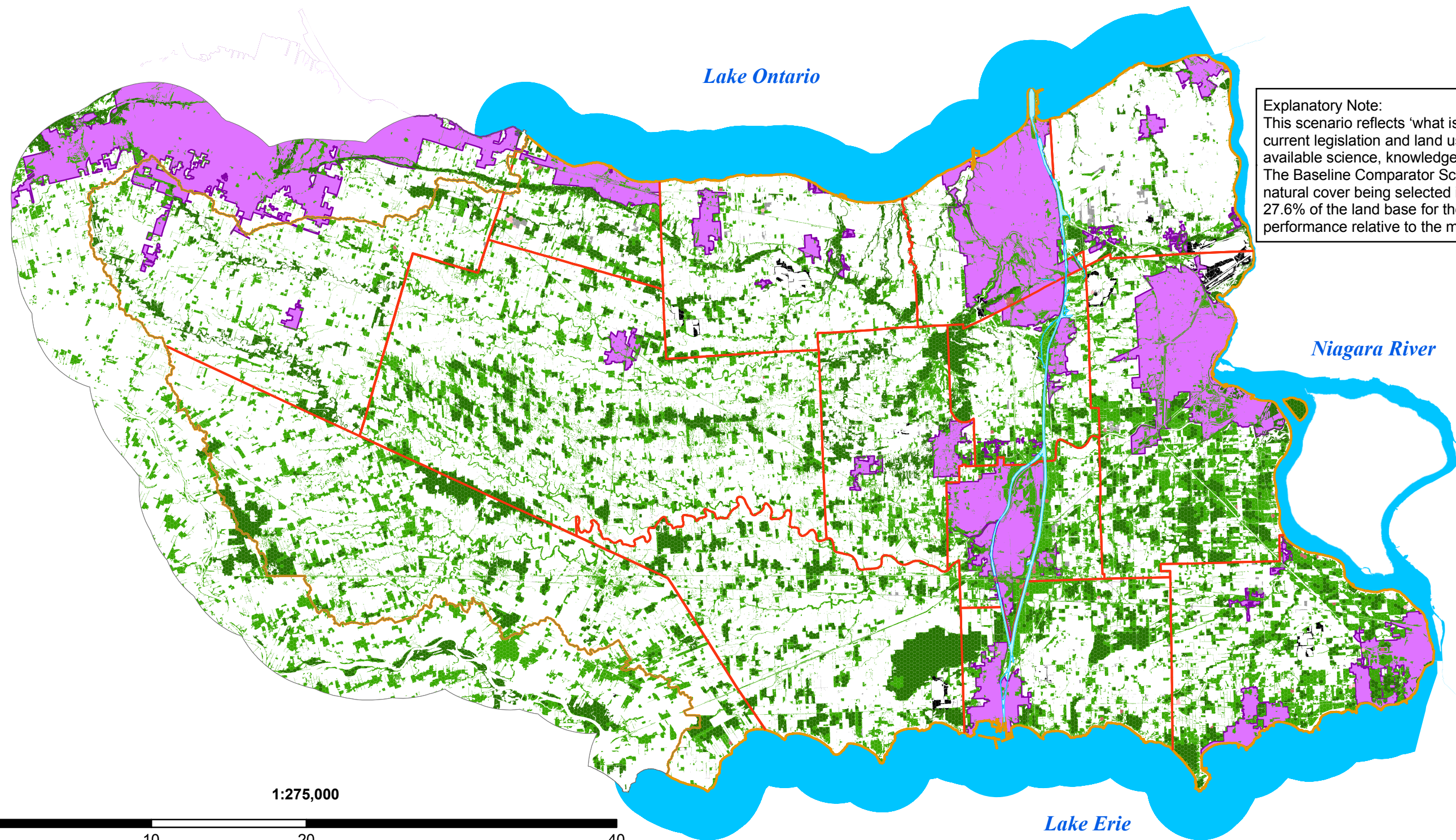
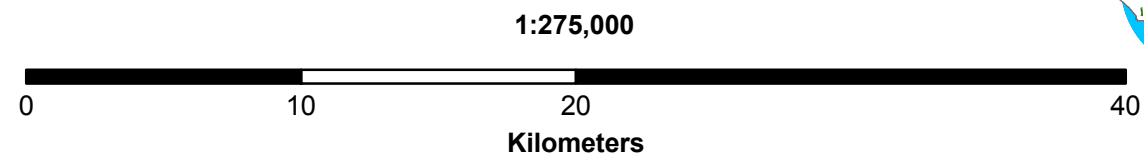


The Baseline Comparator



Explanatory Note:
This scenario reflects 'what is' or the 'status quo' in terms of current legislation and land use policies and applies current available science, knowledge and information on ecological values. The Baseline Comparator Scenario results in 97.3% of the available natural cover being selected into the system which accounts for 27.6% of the land base for the study area. This achieves 56.4% performance relative to the minimum science based thresholds.



Legend

Scenario Status

- Included
- Contains Target at 100
- Selection Frequency 80 to 100
- Selection Frequency 1 to 79
- Not Selected
- Excluded

- Waterbodies
- Urban Boundary
- Municipal Boundary
- NPCA Jurisdiction
- Extended Context Area Buffer



**NIAGARA PENINSULA
CONSERVATION
AUTHORITY**

Produced using information provided by the Ministry of Natural Resources, Copyright © Queen's Printer, 2011.
Produced using information under License with the Regional Municipality of Niagara © Regional Municipality of Niagara, 2011.

