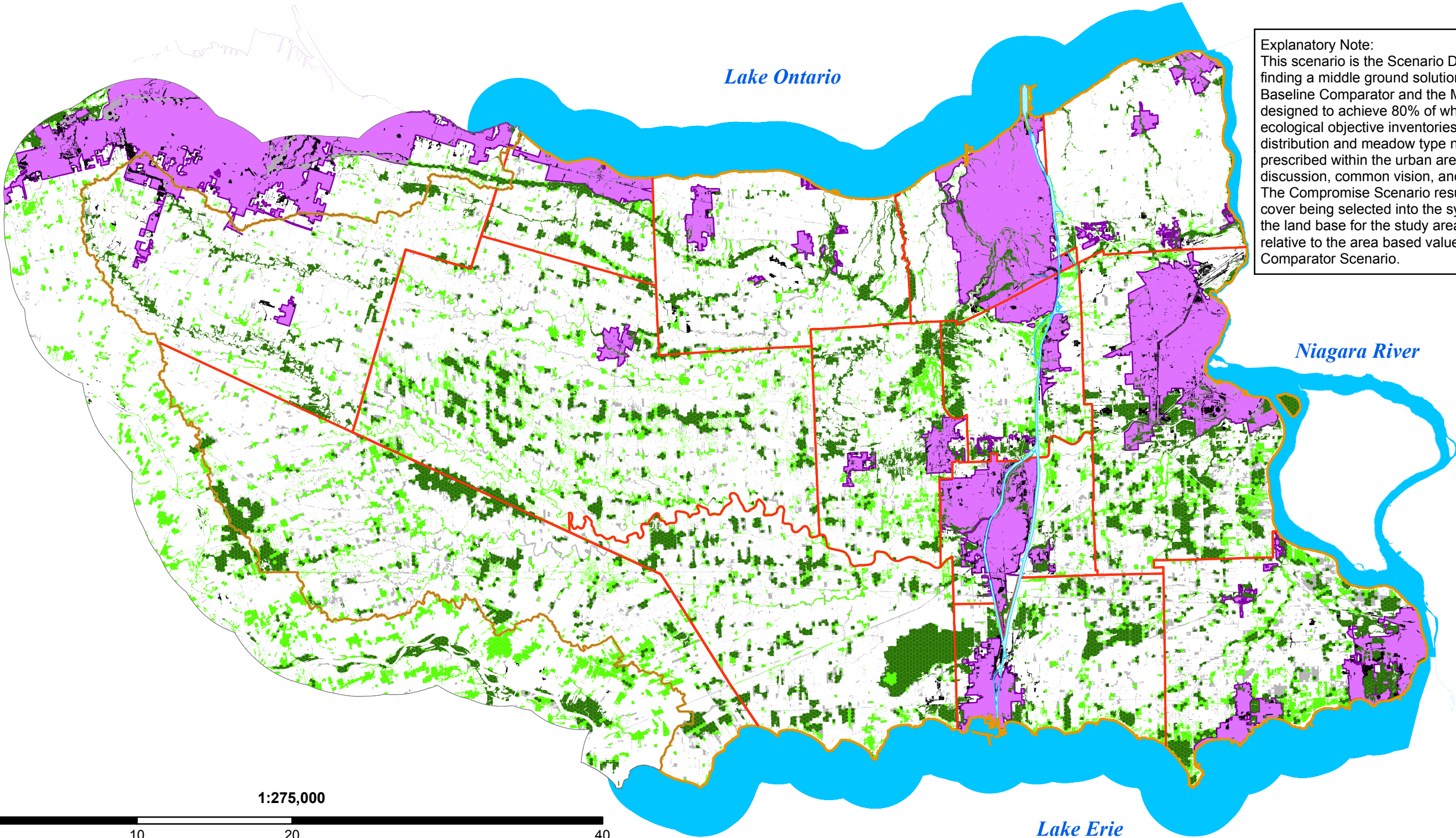


Learning Scenario 20: The Compromise



Explanatory Note:
This scenario is the Scenario Development Team's best attempt at finding a middle ground solution between the two extremes of the Baseline Comparator and the Most Constrained Scenarios. It was designed to achieve 80% of what is currently available in the ecological objective inventories without considering geographic distribution and meadow type natural communities and is completely prescribed within the urban areas. It is most reflective of the overall discussion, common vision, and gathered the most support. The Compromise Scenario results in 61.2% of the available natural cover being selected into the system which accounts for 17.4 % of the land base for the study area. This achieves 75.6% performance relative to the area based value captured under the Baseline Comparator Scenario.



- Legend**
- | | |
|--------------|------------------------------|
| Included | Waterbodies |
| Selected | Urban Boundary |
| Not Selected | Municipal Boundary |
| Excluded | NPCA Jurisdiction |
| | Extended Context Area Buffer |