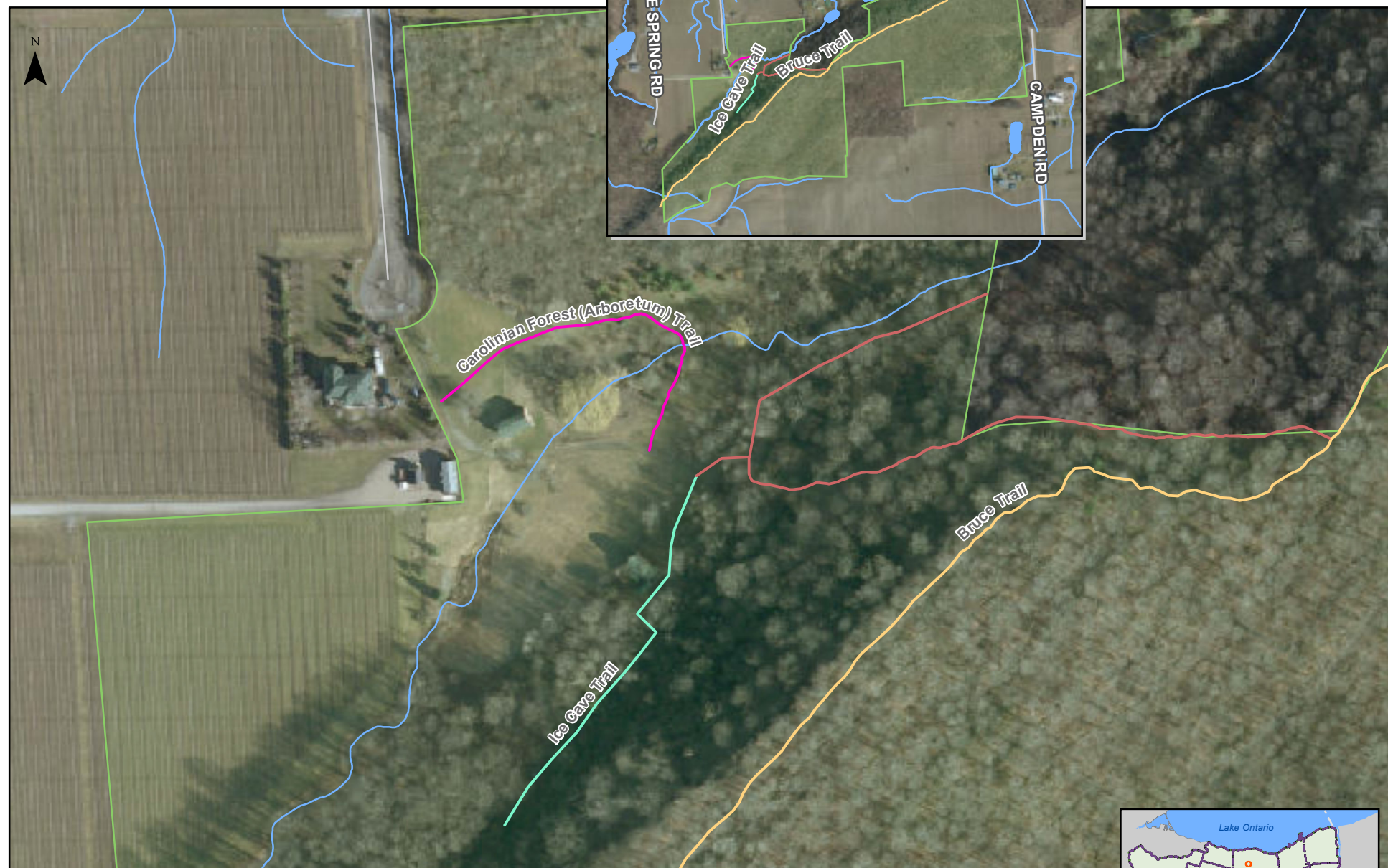



# Conservation Area Trails: Cave Springs



- |   |   |
|---|---|
|  Watercourses                 |  Unnamed Trails                      |
|  Waterbodies                  |  Bruce Trail                         |
|  Local Road                   |  Carolinian Forest (Arboretum) Trail |
|  Conservation Area Boundaries |  Ice Cave Trail                      |

Meters 

All Frames: North American Datum 1983, Universal Transverse Mercator 6° Projection, Zone 17N, Central Meridian 81° West. Produced by the Niagara Peninsula Conservation Authority with data supplied under licence by members of the Ontario Geospatial Data Exchange, 2014.

